

CATALOG FOR CROSS REFERENCE

Component seals

O ring mechanical seals

	AES	VULCAN	Burgmann	CRANE	Roten	Sterling	Flowserve	Pages
AS-R155			<u>BT-FN</u>					13
AS-R3N			<u>M3N</u>					14
AS-R37G			<u>M37/M37G</u>					15
AS-R8-1	M01S	1609S			<u>8-1</u>	290S		16
AS-R8-1T	M05S	1645S			<u>8-1T</u>	294S		17
AS-R8B1	M02S	1609BS			<u>8B1</u>	290BS		18
AS-R8B1T					<u>8B1T</u>			19
AS-R58B	M04S	1659BS	BT-C5.KB		<u>58B</u>	259BS		20
AS-R58U	M03S	1659S	BT-C5.KU		<u>58U</u>	259S		21
AS-RW01	<u>W01</u>	1688		80(DF/FP)	7K	280	168	22
AS-R92N	M010		<u>HJ92N</u>		EHS			23
AS-R7N			<u>M7N</u>					24
AS-RH7N			<u>H7N</u>					25
AS-R74D			<u>M74-D</u>					26
AS-RH74D			<u>H74-D</u>					27
AS-RO-A							<u>RO</u>	28
AS-RO-B							<u>RO</u>	29
AS-R1527			<u>Eagle 1527</u>					30

Elastomer bellow mechanical seals

	AES	VULCAN	Burgmann	CRANE	Roten	Sterling	Flowserve	Pages
AS-E01	P05U	A5	MG901/D1-G55	<u>1(US)</u>			51	31
AS-E01A				<u>1A</u>				32
AS-E01B				<u>1B</u>				33
AS-E02	P04U	A4		<u>2(US)</u>			52	34
AS-E20&E20T	P02/P02T	20	MG920/D1-G50	2(N SEAT)	<u>21</u>	212	200	35
AS-E21&E21T	P04/P04T	11		21	21A	212A	110	36
AS-E24	P03	<u>24</u>	MG912/D1-G60	521	52/L4K	522	240	37
AS-E560			<u>EA560(A)</u>					38
AS-EBIA								39
AS-E210	B05	14DIN		<u>2100</u>		540	140	40
AS-EMG	B02/B012/B01	19/192/193	<u>MG1/12/13/S20</u>		L3/L3K/L3	SMG1/12/1	190/192/193	41
AS-E502	B07	1724		<u>502</u>		524		42
AS-E10R&10T				<u>10R&10T</u>				43
AS-EWB2				<u>WB2</u>				44

PTFE Wedge Mechanical seals

	AES	VULCAN	Burgmann	CRANE	Roten	Sterling	Flowserve	Pages
AS-P09	M01	1609		<u>9</u>	90	290		45
AS-P09B	M02	1609B		<u>9B</u>		290B		46
AS-P09T	M05	1645		<u>9T</u>		294		47
AS-P09BT	M06	1645B		<u>9BT</u>		294B		48
AS-P59B	M04	1659B	BT-C56.KB	<u>59B</u>		259B		49
AS-P59U	M03	1659	BT-C56.KU	<u>59U</u>		259		50

Mechanical seals for sanitary pumps

AS-SP07								51
---------	--	--	--	--	--	--	--	----

Mechanical seals for Grundfos pump seal

AS-GLFS								52
---------	--	--	--	--	--	--	--	----

Mechanical seals for APV pump

AS-APV-1/2								53
------------	--	--	--	--	--	--	--	----

Mechanical seals for INPOXPA PROLAC and SLR Pump

AS-IPS								54
--------	--	--	--	--	--	--	--	----

Customized seals

AS-SP1								55
--------	--	--	--	--	--	--	--	----



Mechanical seal

弹簧式机械密封

Component seal series(Oring type seals)

		155						
Size/Metric	d	D3	D6	D7	L3	L4	L8	
A	10	10	20	14.0	18.1	15	5.5	7.0
	11	11	22	16.5	20.6	18	5.5	7.0
	12	12	22	16.5	20.6	18	5.5	7.0
	13	13	25	19.0	23.1	22	6.0	7.5
	14	14	25	19.0	23.1	22	6.0	7.5
	15	15	29	21.0	26.9	22	7.0	9.0
	16	16	29	21.0	26.9	23	7.0	9.0
	17	17	29	21.0	26.9	23	7.0	9.0
	18	18	33	25.0	30.9	24	8.0	9.5
B	19	19	33	25.0	30.9	25	8.0	9.5
	20	20	33	25.0	30.9	25	8.0	9.5
	21	21	38	30.0	35.4	28	8.0	9.5
	22	22	38	30.0	35.4	28	8.0	9.5
	23	23	38	30.0	35.4	28	8.0	9.5
	24	24	38	30.0	35.4	27	8.0	9.5
	25	25	40	33.0	38.2	27	8.5	9.5
	28	28	46	38.0	43.3	29	9.0	11.0
C	29	29	46	38.0	43.3	30	9.0	11.0
	30	30	46	38.0	43.3	30	9.0	11.0
	32	32	46	38.0	43.3	30	9.0	11.0
	33	33	50	45.0	53.5	39	11.5	13.0
	35	35	50	45.0	53.5	39	11.5	13.0
	38	38	55	52.0	60.5	39	11.5	13.0
	40	40	55	52.0	60.5	39	11.5	13.0
		155A						
Size/Metric	d	D3	D6	D7	L3	L4	L8	
D	10	10	20	17	21	15	7	8.5
	12	12	22	19	23	18	7	8.5
	14	14	25	21	25	22	7	8.5
	16	16	29	23	27	23	7	8.5
	18	18	33	27	33	24	10	12.0
	20	20	33	29	35	25	10	12.0
	22	22	38	31	37	25	10	12.0
E	24	24	38	33	39	27	10	12.0
	25	25	40	34	40	27	10	12.0
	28	28	46	37	43	29	10	12.0
	30	30	46	39	45	30	10	12.0
	32	32	46	42	48	30	10	11.5
	33	33	50	42	48	39	10	11.5
	35	35	50	44	50	39	10	11.5
	38	38	55	49	56	39	13	15.0
F	40	40	55	51	58	39	13	15.0

结构说明(Structure Description):
Equivalent to Burgmann BT-FN
锥形弹簧设计 (Conical spring design)

运行参数(Operating Limits):
温度(Temperature) -20---150°C
转速(Speed) 10m/s
压力(Pressure) 10bar
标准尺寸(Standard size) 10 - 40mm

常用材料组合(Material):
密封唇(Seal rings) 石墨, 碳化硅, 氧化铝 (Car,Sic,Saic,TC)
辅助密封(Secondary seals) 丁腈橡胶, 乙丙橡胶, 氟橡胶等 (NBR,EPDM,Viton etc.)
金属件(Secondary seal and metal parts): 304,316

CUSTOMER:	www.asinoseal.com	ASINOSEAL CO.,LTD
P.O. NO.:	Tel:+86-512-58227959	张家港奥森诺密封有限公司
REF:	Fax:+86-512-58228759	
DRAWN BY:	STA'D	Installation Drawing
CHECKED:		TYPE & SIZE:
APPV:		AS-R155&155A
SCALE:	DATE:	PAGE:X/X





锥形弹簧式机械密封
Component seal series (Conical spring type seals)

Size/Metric	d	D3	D6	D7	D8	L3	L31	L4	L8
10	10	19	17	21	3	15.5	15.5	10.0	17.5
12	12	21	19	23	3	16.0	15.5	10.0	17.5
14	14	23	21	25	3	16.5	15.5	10.0	17.5
16	16	26	23	27	3	18.0	17.5	10.0	17.5
18	18	29	27	33	3	19.5	18.5	11.5	19.5
20	20	31	29	35	3	22.0	20.0	11.5	19.5
22	22	33	31	37	3	21.5	21.5	11.5	19.5
24	24	35	33	39	3	23.5	23.0	11.5	19.5
25	25	36	34	40	3	26.5	24.5	11.5	19.5
28	28	40	37	43	3	26.5	24.5	11.5	19.5
30	30	43	39	45	3	26.5	24.5	11.5	19.5
32	32	46	42	48	3	28.5	28.0	11.5	19.5
33	33	47	42	48	3	28.5	-	11.5	19.5
35	35	49	44	50	3	28.5	28.0	11.5	19.5
38	38	53	49	56	4	33.5	31.0	14.0	22.0
40	40	56	51	58	4	36.0	34.0	14.0	22.0
43	43	59	54	61	4	38.5	-	14.0	22.0
45	45	61	56	63	4	39.5	36.5	14.0	22.0
48	48	64	59	66	4	46.0	42.0	14.0	22.0
50	50	66	62	70	4	45.0	43.0	15.0	23.0
53	53	69	65	73	4	47.0	-	15.0	23.0
55	55	71	67	75	4	49.0	47.0	15.0	23.0
58	58	76	70	78	4	55.0	50.0	15.0	23.0
60	60	78	72	80	4	55.0	51.0	15.0	23.0
63	63	83	75	83	4	55.0	-	15.0	23.0
65	65	84	77	85	4	55.0	52.0	15.0	23.0
68	68	88	81	90	4	55.0	53.0	18.0	26.0
70	70	90	83	92	4	57.0	54.0	18.0	26.0
75	75	98	88	97	4	62.0	55.0	18.0	26.0
80	80	100	95	105	4	61.8	58.0	18.2	26.2

结构说明 (Structure Description):
Equivalent to Burgmann M3N Seal
锥形弹簧密封 (Conical spring design)

运行参数 (Operating Limits):
温度 (Temperature): -20---180°C
转速 (Speed): 15m/s
压力 (Pressure): 10bar
标准尺寸 (Standard size): 10 - 80mm

常用材料组合 (Material):
密封环 (Seal ring): 石墨, 碳化硅, 碳化钨 (Car, Sic, Sic, TC)
辅助密封 (Secondary seals): 丁腈橡胶, 乙丙橡胶, 氟橡胶等 (NBR, EPDM, Viton etc.)
金属弹簧 (Spring and metal parts): 304, 316, HAST.C

CUSTOMER:	www.asinoseal.com	ASINSEAL CO.,LTD 张家港爱斯诺机械密封有限公司
P.O. NO.:	Tel:+86-512-58227959 Fax:+86-512-58228759	
REF:	Mail:sales@asinoseal.com	Installation Drawing
DRAWN BY:	No.265 South Chang'An Rd,Zhangjiagang,China	
CHECKED:	STA'D:	TYPE & SIZE: AS-R3N
APP'VD:	DATE:	
SCALE:	PAGE:X/X	





锥形弹簧式机械密封
Component seal series (Conical spring type seals)

Size/Metric	d	D3	D6	D7	D8	L2	L31	L4	L5
10	10	20	17	21	3	16.9	-	10.0	17.5
12	12	22	19	23	3	17.4	-	10.0	17.5
14	14	24	21	25	3	17.4	16.5	10.0	17.5
16	16	26	23	27	3	19.5	16.5	10.0	17.5
18	18	31	27	33	3	20.5	18.0	11.5	19.5
20	20	34	29	35	3	22.0	19.0	11.5	19.5
22	22	36	31	37	3	23.5	20.5	11.5	19.5
24	24	38	33	39	3	25.0	22.0	11.5	19.5
25	25	39	34	40	3	26.5	23.5	11.5	19.5
28	28	42	37	43	3	26.5	24.5	11.5	19.5
30	30	44	39	45	3	25.0	24.5	11.5	19.5
32	32	46	42	48	3	28.5	28.0	11.5	19.5
33	33	47	42	48	3	-	-	11.5	19.5
35	35	49	44	50	3	28.5	28.0	11.5	19.5
38	38	54	49	56	4	32.2	31.0	14.0	22.0
40	40	56	51	58	4	34.7	34.0	14.0	22.0
43	43	59	54	61	4	-	-	14.0	22.0
45	45	61	56	63	4	39.2	36.5	14.0	22.0
48	48	64	59	66	4	44.7	42.0	14.0	22.0
50	50	66	62	70	4	45.7	43.0	15.0	23.0
53	53	69	65	73	4	-	-	15.0	23.0
55	55	71	67	75	4	49.0	47.0	15.0	23.0
58	58	78	70	78	4	52.0	50.0	15.0	23.0
60	60	79	72	80	4	53.0	51.0	15.0	23.0
63	63	83	75	83	4	-	-	15.0	23.0
65	65	85	77	85	4	54.3	52.0	15.0	23.0
68	68	88	81	90	4	55.3	52.7	18.0	26.0
70	70	90	83	92	4	56.3	54.0	18.0	26.0
75	75	98	88	97	4	56.3	54.0	18.0	26.0
80	80	103	95	105	4	59.3	58.0	18.2	26.2

结构说明 (Structure Description):
Equivalent to Burgmann M37 & M37G seal
锥形弹簧密封 (Conical spring design)

运行参数 (Operating Limits):
温度 (Temperature): -20---180°C
转速 (Speed): 15m/s
压力 (Pressure): 10bar
标准尺寸 (Standard sizes): 10 - 80mm

常用材料组合 (Material):
密封环 (Seal ring): 石墨, 碳化硅, 氧化铝 (Car, Sic, Saic, Tc)
辅助密封 (Secondary seals): 丁腈橡胶, 乙丙橡胶, 氟橡胶等 (NBR, EPDM, Viton etc.)
金属零件 (Spring and metal parts): 304, 316, HAST C

CUSTOMER:	www.asinoseal.com	ASINOSEAL CO.,LTD
P.D. NO.:	Tel:+86-512-58227959	张家港爱斯盾机械有限公司
REF:	Fax:+86-512-58228759	
DRAWN BY:	STA'D:	Mail:sales@asinoseal.com
CHECKED:		No.265 South Chang'An Rd,Zhangjiagang ,China
APPVD:		
SCALE:	DATE:	PAGE:X/X

TYPE & SIZE: AS-R37&R37G





小弹簧式机械密封
Component seal series (Multiple spring type seals)

Size/Inch	d	D3	D6	D7	L3	L4
0.500	12.7	26.19	14.0	25.60	20.62	7.92
0.625	15.8	30.15	17.5	31.95	19.05	10.31
0.750	19.0	33.32	21.0	35.12	22.23	10.31
0.875	22.2	36.50	24.0	38.30	23.80	10.31
1.000	25.4	39.67	27.5	41.48	25.40	11.10
1.125	28.5	42.85	30.5	44.65	26.97	11.10
1.250	31.7	47.63	33.5	47.83	26.97	11.10
1.375	34.9	50.80	37.0	51.00	28.58	11.10
1.500	38.1	53.98	40.0	54.18	28.58	11.10
1.625	41.2	60.33	43.5	60.53	34.93	12.70
1.750	44.4	63.50	46.5	63.70	34.93	12.70
1.875	47.6	66.68	49.5	66.88	34.93	12.70
2.000	50.8	69.85	53.0	70.05	34.93	12.70
2.125	53.9	76.20	56.0	76.40	42.85	14.27
2.250	57.1	79.38	59.0	79.58	42.85	14.27
2.375	60.3	82.55	62.5	82.75	42.85	14.27
2.500	63.5	85.73	65.5	85.93	42.85	14.27
2.625	66.6	88.90	68.5	85.93	42.85	15.88
2.750	69.8	92.08	72.0	89.10	42.85	15.88
2.875	73.0	95.25	75.0	95.45	42.85	15.88
3.000	76.2	96.82	78.5	98.63	42.85	15.88
3.125	79.3	100.00	81.5	101.80	42.85	19.84
3.250	82.5	104.78	84.5	104.98	42.85	19.84
3.375	85.7	107.95	88.0	108.15	42.85	19.84
3.500	88.9	111.13	91.0	111.33	42.85	19.84
3.625	92.0	114.30	94.0	114.50	42.85	19.84
3.750	95.2	117.48	97.5	117.68	42.85	19.84
3.875	98.4	120.65	100.5	120.85	42.85	19.84
4.000	101.6	123.83	103.5	124.03	42.85	19.84

结构说明:
Equivalent to AES M01S, Johncrane 8-1 Seal
小弹簧结构, 非平衡型密封 (Multiple spring design, Unbalanced seal)

运行参数(Operating Limits):
温度(Temperature): -20---180°C
转速(Speed): 15m/s
压力(Pressure): 12bar
标准尺寸(Standard size): 0.5" - 4.0"

常用材料组合(Material):
密封唇(Seal ring): 石墨, 碳化硅, 陶瓷, 氧化铝 (Car, Sic, Ssic, Ceramic, TC)
辅助密封(Secondary seals): 丁腈橡胶, 乙丙橡胶, 氟橡胶等 (NBR, EPDM, Viton etc.)
金属衬套(Spring and metal parts): 304, 316, HAST-C

CUSTOMER:	www.asinoseal.com	ASINOSEAL CO.,LTD
P.O. NO.:	Tel:+86-512-58227959	张家港爱斯迪机械密封有限公司
REF:	Fax:+86-512-58228759	Installation Drawing
DRAWN BY:	STA'D: Mail:sales@asinoseal.com	TYPE & SIZE:
CHECKED:	No.265 South Chang'An	AS-R8-1
APPVD:	Rd,Zhangjiogang ,China	
SCALE:	DATE:	PAGE:X/X





小弹簧式机械密封
Component seal series (Multiple spring type seals)

Size/Inch	d	D3	D6	D7	L3	L4
0.500	12.7	23.80	13.4	25.40	23.80	7.9
0.625	15.8	26.97	16.6	31.75	23.80	10.3
0.750	19.0	30.15	19.7	34.93	23.80	10.3
0.875	22.2	32.32	22.9	38.10	23.80	10.3
1.000	25.4	36.50	26.1	41.28	25.40	11.1
1.125	28.5	39.67	29.3	44.45	25.40	11.1
1.250	31.7	42.85	32.4	47.63	25.40	11.1
1.375	34.9	49.20	35.6	50.80	34.93	11.1
1.500	38.1	49.50	38.8	53.98	28.58	11.1
1.625	41.2	57.15	42.4	60.33	29.36	12.7
1.750	44.4	58.72	45.5	63.50	34.93	12.7
1.875	47.6	63.50	48.7	66.68	34.93	12.7
2.000	50.8	66.68	51.9	69.85	34.93	12.7
2.125	53.9	71.42	55.0	76.20	42.85	14.3
2.250	57.1	72.21	58.2	79.38	34.93	14.3
2.375	60.3	76.20	61.4	82.55	42.85	14.3
2.500	63.5	79.38	64.6	85.73	34.93	14.3
2.625	66.6	82.55	67.7	85.73	42.85	15.9
2.750	69.8	85.73	70.9	88.90	42.85	15.9
2.875	73.0	88.90	74.1	95.25	42.85	15.9
3.000	76.2	92.08	77.3	98.43	42.85	15.9
3.125	79.3	95.25	80.5	101.60	42.85	19.8
3.250	82.5	98.43	83.6	104.78	42.85	19.8
3.375	85.7	101.60	86.8	107.95	42.85	19.8
3.500	88.9	104.78	90.0	111.13	42.85	19.8
3.625	92.0	107.95	93.1	114.30	42.85	19.8
3.750	95.2	111.13	96.3	117.48	42.85	19.8
3.875	98.4	114.30	99.5	120.65	42.85	19.8
4.000	101.6	117.48	102.7	123.83	42.85	19.8

结构说明(Structure Description):
Equivalent to AES M05S, Johncrane 8-1T
小弹簧结构, 多平衡型设计 (Multiple spring design, Unbalanced seal)

运行参数(Operating Limits):
温度(Temperature): -20---180°C
转速(Speed): 15m/s
压力(Pressure): 12bar
标准尺寸(Standard size): 0.5" - 4.0"

常用材料组合(Material):
密封环(Signet rings): 石墨, 碳化硅, 氧化铝 (Car, Sic, Ssic, Tc)
辅助密封(Secondary seals): 丁腈橡胶, 乙丙橡胶, 氟橡胶等 (NBR, EPDM, Viton etc.)
金属衬套(Spring and metal parts): 304, 316, HAST-C

CUSTOMER:	www.asinoseal.com	ASINOSEAL CO.,LTD
P.O. NO.:	Tel:+86-512-58227959	张家港爱斯诺机械密封有限公司
REF:	Fax:+86-512-58228759	
DRAWN BY:	STA'D:	Installation Drawing
CHECKED:	Mail:sales@asinoseal.com	TYPE & SIZE:
APPVD:	No.265 South Chang'An	AS-R8-1T
SCALE:	Rd,Zhangjiagang ,China	
DATE:	PAGE:X/X	





小弹簧式机械密封
Component seal series (Multiple spring type seals)

Size/Inch	d	d1	D3	D6	D7	L3	L4	L65
1.000	25.4	22.2	39.67	24.0	38.30	33.32	10.31	8.70
1.125	28.5	25.4	42.85	27.5	41.48	34.93	11.10	8.70
1.250	31.7	28.5	47.63	30.5	44.65	34.93	11.10	7.90
1.375	34.9	28.5	50.80	30.5	44.65	36.50	11.10	8.70
1.500	38.1	31.7	53.98	33.5	47.83	36.50	11.10	8.70
1.625	41.2	34.9	60.33	37.0	51.00	44.45	11.10	11.10
1.750	44.4	38.1	63.50	40.0	54.18	44.45	11.10	11.10
1.875	47.6	41.2	66.68	43.5	60.53	44.45	12.70	11.10
2.000	50.8	44.4	69.85	46.5	63.70	44.45	12.70	11.10
2.125	53.9	47.6	76.20	49.5	66.88	52.37	12.70	12.70
2.250	57.1	50.8	79.38	53.0	70.05	52.37	12.70	12.70
2.375	60.3	53.9	82.55	56.0	76.40	52.37	14.27	12.70
2.500	63.5	57.1	85.73	59.0	79.58	52.37	14.27	12.70
2.625	66.6	60.3	88.90	62.5	82.75	52.37	14.27	12.70
2.750	69.8	63.5	92.08	65.5	85.93	52.37	14.27	12.70
2.875	73.0	66.6	95.25	68.5	85.93	52.37	15.88	12.70
3.000	76.2	69.8	96.82	72.0	89.10	52.37	15.88	12.70
3.125	79.3	73.0	100.00	75.0	95.45	52.37	15.88	14.30
3.250	82.5	76.2	104.78	78.5	98.63	52.37	15.88	14.30
3.375	85.7	79.3	107.95	81.5	101.80	52.37	19.84	14.30
3.500	88.9	82.5	111.13	84.5	104.98	52.37	19.84	14.30
3.625	92.0	85.7	114.30	88.0	108.15	52.37	19.84	14.30
3.750	95.2	88.9	117.48	91.0	111.33	52.37	19.84	14.30
3.875	98.4	92.0	120.65	94.0	114.50	52.37	19.84	14.30
4.000	101.6	95.2	123.83	97.5	117.68	52.37	19.84	14.30

结构说明(Structure Description):
Equivalent to AES M02S, Johncrane 881 Seal
小弹簧密封, 平衡型密封 (Multiple spring design + balanced seal)

运行参数(Operating Limits):
温度(Temperature): -20---180°C
转速(Speed): 15m/s
压力(Pressure): 25bar
标准尺寸(Standard size): 1" - 4.0"

常用材料组合(Material):
密封端环(Seal ring): 石墨, 碳化硅, 陶瓷, 氧化铝 (Car, Sic, Ssic, Ceramic, Tci)
辅助密封(Secondary seals): 丁腈橡胶, 乙丙橡胶, 氟橡胶等 (NBR, EPDM, Viton etc.)
金属衬套(Spring and metal parts): 304, 316, HAST C

CUSTOMER: www.asinoseal.com
P.O. NO.: Tel:+86-512-58227959
REF: Fax:+86-512-58228759
DRAWN BY: STA'D: Mail:sales@asinoseal.com
CHECKED: No.265 South Chang'An Rd,Zhangjiagang ,China
APPVD:
SCALE: DATE: PAGE:X/XX

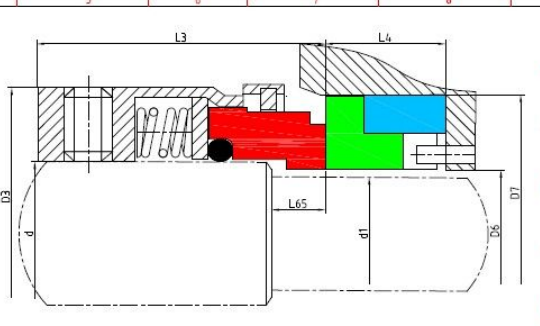
ASINOSEAL CO.,LTD
张家港爱斯迪机械密封有限公司
Installation Drawing
TYPE & SIZE:
AS-R861





小弹簧式机械密封 Component seal series (Multiple spring type seals)

	1	2	3	4	5	6	7	8
Size/Inch	d	d1	D3	D6	D7	L3	L4	L65
A 1.000	25.4	22.20	36.50	22.9	38.10	33.32	10.3	8.7
1.125	28.5	25.40	39.67	26.1	41.28	34.93	11.1	8.7
1.250	31.7	28.50	42.85	29.3	44.45	34.93	11.1	8.7
1.375	34.9	28.50	49.20	29.3	44.45	42.85	11.1	8.7
1.500	38.1	31.70	49.20	32.4	47.63	36.50	11.1	8.7
1.625	41.2	34.90	57.15	35.6	50.80	40.46	11.1	11.1
1.750	44.4	38.10	58.72	38.8	53.98	44.45	11.1	11.1
1.875	47.6	41.20	63.50	42.4	60.33	44.45	12.7	11.1
2.000	50.8	44.40	66.68	45.5	63.50	44.45	12.7	11.1
2.125	53.9	47.60	71.42	48.7	66.68	52.37	12.7	12.7
2.250	57.1	50.80	72.21	51.9	69.85	44.45	12.7	12.7
2.375	60.3	53.90	76.20	55.0	76.20	52.37	14.3	12.7
2.500	63.5	57.10	79.38	58.2	79.38	44.45	14.3	12.7
2.625	66.6	60.30	82.55	61.4	82.55	52.37	14.3	12.7
2.750	69.8	63.50	85.73	64.6	85.73	52.37	14.3	12.7
2.875	73.0	66.60	88.90	67.7	85.73	52.37	15.9	12.7
3.000	76.2	69.80	92.08	70.9	88.90	52.37	15.9	12.7
3.125	79.3	73.00	95.25	74.1	95.25	52.37	15.9	14.3
3.250	82.5	76.20	98.43	77.3	98.43	52.37	15.9	14.3
3.375	85.7	79.30	101.60	80.5	101.60	52.37	19.8	14.3
3.500	88.9	82.50	104.78	83.6	104.78	52.37	19.8	14.3
3.625	92.0	85.70	107.95	86.8	107.95	52.37	19.8	14.3
3.750	95.2	88.90	111.13	90.0	111.13	52.37	19.8	14.3
3.875	98.4	92.00	114.30	93.1	114.30	52.37	19.8	14.3
4.000	101.6	95.20	117.48	96.3	117.48	52.37	19.8	14.3



结构说明(Structure Description):
Equivalent to Johncrane 881T seal
小弹簧结构, 平衡型密封 (Multiple spring design + balanced seal)

运行参数(Operating Limits):
温度(Temperature): -20---180°C
转速(Speed): 15m/s
压力(Pressure): 25bar
标准尺寸(Standard size): 1" - 4.0"

常用材料组合(Material):
密封环(Signet rings): 石墨, 碳化硅, 陶瓷, 氧化铝 (Car, Sic, Ssic, Ceramic, Tc)
辅助密封(Secondary seals): 丁腈橡胶, 乙丙橡胶, 氟橡胶等 (NBR, EPDM, Viton etc.)
金属衬套(Spring and metal parts): 304, 316, HA1.1 C

CUSTOMER:	www.asinoseal.com	ASINOSEAL CO.,LTD
P.O. NO.:	Tel:+86-512-58227959	张家港爱斯迪机械密封有限公司
REF:	Fax:+86-512-58228759	
DRAWN BY:	STA'D:	Installation Drawing
CHECKED:		TYPE & SIZE:
APPVD:		AS-R8BIT
SCALE:	DATE:	PAGE:X/X





小弹簧式机械密封 Component seal series (Multiple spring type seals)

Size/Metric	d1	d	D3	D6	D7	L3	L4	L8	L65
14	14	18	32	21	25	30.5	12.0	18.5	6.0
16	16	20	34	23	27	30.5	12.0	18.5	6.0
18	18	22	36	27	33	31.5	13.5	20.5	6.5
20	20	24	38	29	35	31.5	13.5	20.5	6.5
22	22	26	40	31	37	31.5	13.5	20.5	6.5
24	24	28	42	33	39	34.2	13.3	20.3	6.7
25	25	30	44	34	40	34.5	13.0	20.0	7.0
28	28	33	47	37	43	37.5	12.5	19.5	7.5
30	30	35	49	39	45	38.0	12.0	19.0	8.0
32	32	38	54	42	48	38.0	12.0	19.0	8.0
33	33	38	54	42	48	38.0	12.0	19.0	8.0
35	35	40	56	44	50	38.0	12.0	19.0	8.0
38	38	43	59	49	56	39.5	13.0	20.0	10.0
40	40	45	61	51	58	39.5	13.0	20.0	10.0
43	43	48	64	54	61	39.5	13.0	20.0	10.0
45	45	50	66	56	63	39.5	13.0	20.0	10.0
48	48	53	69	59	66	39.5	13.0	20.0	10.0
50	50	55	71	62	70	44.0	13.5	20.5	11.5
53	53	58	78	65	73	44.0	13.5	20.5	11.5
55	55	60	80	67	75	44.0	13.5	20.5	11.5
58	58	63	83	70	78	49.0	13.5	20.5	11.5
60	60	65	85	72	80	49.0	13.5	20.5	11.5
63	63	68	88	75	83	49.0	13.5	20.5	11.5
65	65	70	90	77	85	49.0	13.5	20.5	11.5
70	70	75	95	83	92	55.0	14.5	21.5	13.5
75	75	80	104	88	97	55.0	14.5	21.5	13.5
80	80	85	109	95	105	55.0	15.0	22.0	13.0
85	85	90	114	100	110	60.0	15.0	22.0	13.0
90	90	95	119	105	115	60.0	15.0	22.0	13.0
95	95	100	124	110	120	60.0	15.0	22.0	13.0
100	100	105	129	115	125	60.0	15.0	22.0	13.0

结构说明(Structure Description):
Equivalent to AES M84S,Burgmann BT-C5,KB,Johncrane 58B
小弹簧结构,平衡型密封 (Multiple spring design + balanced seal)

运行参数(Operating Limits):
温度(Temperature): -20---180°C
转速(Speed): 15m/s
压力(Pressure): 25bar
标准尺寸(Standard size): 14 - 100mm

常用材料组合(Material):
密封环圈(Seal ring): 石墨, 碳化硅, 陶瓷, 氧化铝 (Car,Sic,Ssic,Ceramic,Ti)
辅助密封(Secondary seals): 丁腈橡胶, 乙丙橡胶, 氟橡胶等 (NBR,EPDM,Viton etc.)
金属衬套(Spring and metal parts): 304,316,HAST.C

CUSTOMER:	www.asinoseal.com	ASINOSEAL CO.,LTD
P.O. NO.:	Tel:+86-512-58227959	张家港爱斯迪机械密封有限公司
REF:	Fax:+86-512-58228759	
DRAWN BY:	STA'D:	Installation Drawing
CHECKED:		TYPE & SIZE:
APPVD:		AS-R58B
SCALE:	DATE:	PAGE:X/X





小弹簧式机械密封
Component seal series (Multiple spring type seals)

Size/Metric	d	D3	D6	D7	L3	L4	L8
14	14	24	21	25	23.0	12.0	12.8
16	16	26	23	27	23.0	12.0	12.8
18	18	32	27	33	24.0	13.5	14.5
20	20	34	29	35	24.0	13.5	14.5
22	22	36	31	37	24.0	13.5	14.5
24	24	38	33	39	26.7	13.3	14.3
25	25	39	34	40	27.0	13.0	14.0
28	28	42	37	43	30.0	12.5	13.0
30	30	44	39	45	30.5	12.0	13.0
32	32	46	42	48	30.5	12.0	13.0
33	33	47	42	48	30.5	12.0	13.0
35	35	49	44	50	30.5	12.0	13.0
38	38	54	49	56	32.0	13.0	14.0
40	40	56	51	58	32.0	13.0	14.0
43	43	59	54	61	32.0	13.0	14.0
45	45	61	56	63	32.0	13.0	14.0
48	48	64	59	66	32.0	13.0	14.0
50	50	66	62	70	34.0	13.5	14.5
53	53	69	65	73	34.0	13.5	14.5
55	55	71	67	75	34.0	13.5	14.5
58	58	78	70	78	39.0	13.5	14.2
60	60	80	72	80	39.0	13.5	14.2
63	63	83	75	83	39.0	13.5	14.2
65	65	85	77	85	39.0	13.5	14.2
68	68	88	81	90	39.0	13.5	14.2
70	70	90	83	92	45.0	14.5	15.2
75	75	95	88	97	45.0	14.5	15.2
80	80	104	95	105	45.0	15.0	15.7
85	85	109	100	110	45.0	15.0	15.7
90	90	114	105	115	50.0	15.0	15.7
95	95	119	110	120	50.0	15.0	15.7
100	100	124	115	125	50.0	15.0	15.7

结构说明 (Structure Description):
Equivalent to AES M03S, Burgmann BT-C5, KU, Johncrane 58U
小弹簧结构, 平衡角型设计 (Multiple spring design, Unbalanced seal)

运行参数 (Operating Limits):
温度 (Temperature): -20---180°C
速度 (Speed): 15m/s
压力 (Pressure): 12bar
标准尺寸 (Standard size): 1/4 - 100mm

常用材料组合 (Material):
密封环 (Seal ring): 石墨, 碳化硅, 陶瓷, 氧化铝 (Car, Sic, Sic, Ceramic, TC)
辅助密封 (Secondary seals): 丁腈橡胶, 乙丙橡胶, 氟橡胶等 (NBR, EPDM, Viton etc.)
金属件 (Spring and metal parts): 304, 316, HAST C

CUSTOMER:	www.asinoseal.com	ASINOSEAL CO.,LTD
P.O. NO.:	Tel:+86-512-58227959	张家港爱斯诺机械有限公司
REF:	Fax:+86-512-58228759	
DRAWN BY:	STA'D:	Installation Drawing
CHECKED:		TYPE & SIZE:
APPVD:		AS-R58U
SCALE:	DATE:	PAGE: X / X





波形弹簧式机械密封 Component seal series (Wave spring type seals)

	1		2		3		4		5	6	7	8
	Size (d)		D3		D7		L3					
	Metric	Inch	Metric	Inch	Metric	Inch	Metric	Inch	Metric	Inch		
A	15.8	0.625	27.0	1.063	28.5	1.125	19.1	0.750	6.3	0.250		
	16.0	0.630	27.0	1.063	28.5	1.125	19.1	0.750	6.3	0.250		
	19.1	0.750	30.0	1.181	31.7	1.250	19.1	0.750	6.3	0.250		
	24.0	0.945	34.1	1.343	35.4	1.396	19.1	0.750	7.6	0.300		
	28.0	1.102	40.0	1.575	42.0	1.654	19.1	0.750	7.6	0.300		
B	28.6	1.125	39.5	1.555	41.2	1.625	19.1	0.750	7.6	0.300		
	30.0	1.181	41.0	1.614	42.7	1.681	19.1	0.750	7.6	0.300		
	31.7	1.250	42.4	1.669	44.2	1.742	19.1	0.750	7.6	0.300		
	32.0	1.260	42.4	1.669	44.4	1.750	19.1	0.750	7.6	0.300		
	35.0	1.375	45.5	1.791	47.6	1.875	19.1	0.750	7.6	0.300		
	38.0	1.500	51.8	2.039	53.9	2.125	21.1	0.831	8.1	0.319		
C	44.4	1.750	58.2	2.291	60.3	2.375	21.1	0.831	8.1	0.319		
	47.6	1.875	61.4	2.417	63.5	2.500	21.1	0.831	8.1	0.319		
	50.0	1.969	61.9	2.437	63.9	2.518	21.1	0.831	8.1	0.319		
	50.8	2.000	64.6	2.543	66.6	2.625	22.1	0.870	9.6	0.378		
	53.9	2.215	71.0	2.795	73.0	2.875	22.1	0.870	9.6	0.378		
	54.0	2.215	71.0	2.795	73.9	2.911	22.1	0.870	9.6	0.378		
D	54.6	2.150	72.0	2.835	75.0	2.953	22.1	0.870	9.6	0.378		
	55.0	2.165	72.0	2.835	75.0	2.953	22.1	0.870	9.6	0.378		
	63.0	2.480	79.3	3.122	83.0	3.268	25.8	1.016	9.1	0.358		
	63.5	2.500	79.3	3.122	88.9	3.500	25.8	1.016	9.1	0.358		
	69.8	2.750	88.9	3.500	95.2	3.750	25.8	1.016	9.1	0.358		
E	73.0	2.875	94.0	3.701	98.4	3.875	25.8	1.016	9.1	0.358		
	75.0	2.953	96.0	3.780	100.4	3.954	25.8	1.016	9.1	0.358		

结构说明(Structure Description):
Equivalent to AES W01(Roten 7K,Vulcan 1688,have similar series which can replace AES W02,W03,W04
波形弹簧密封 (Wave spring design)

运行参数(Operating Limits):
温度(Temperature): -40---200°C
线速(Speed): 18m/s
压力(Pressure): 8bar
标准尺寸(Standard size): 15.8 - 75mm

常用材料组合(Material):
密封环(seal ring): 石墨, 碳化硅, 氧化铝 (Cer, Sic, Ssic, TC)
辅助密封(Secondary seal): 丁腈橡胶, 乙丙橡胶, 氟橡胶等 (NBR, EPDM, Viton etc)
金属衬套(Spring and metal parts): 304, 316, HAST-C

CUSTOMER:	www.asinoseal.com	ASINOSEAL CO.,LTD 张家港爱斯诺机械密封有限公司
P.O. NO.:	Tel:+86-512-58227959	
REF:	Fax:+86-512-58228759	Installation Drawing
DRAWN BY:	Mail:sales@asinoseal.com	
CHECKED:	No.265 South Chang'An	TYPE & SIZE: AS-RW01
APPV:	Rd,Zhangjiogang_China	
SCALE:	DATE:	PAGE:X/X





波形弹簧式机械密封 Component seal series (Wave spring type seals)

1	2	3	4	5	6	7	8				
Size/Metric	d	D3	D6	D7	D8	L3	L4	L5	F	M	
A	18	18	32	27	33	3	30.5	7.0	15.0	3.0	M4
	20	20	34	29	35	3	30.5	7.0	15.0	3.0	M4
	22	22	36	31	37	3	30.5	7.0	15.0	3.0	M4
	24	24	38	33	39	3	33.0	7.0	15.0	3.5	M5
	25	25	39	34	40	3	33.0	7.0	15.0	3.5	M5
	28	28	42	37	43	3	35.5	7.0	15.0	3.5	M5
	30	30	44	39	45	3	35.5	7.0	15.0	3.5	M5
	32	32	47	42	48	3	35.5	7.0	15.0	3.5	M5
B	33	33	47	42	48	3	35.5	7.0	15.0	3.5	M5
	35	35	49	44	50	3	35.5	7.0	15.0	3.5	M5
	38	38	54	49	56	4	37.0	8.0	16.0	4.0	M5
	40	40	56	51	58	4	37.0	8.0	16.0	4.0	M5
	43	43	59	54	61	4	37.0	8.0	16.0	4.0	M5
	45	45	61	56	63	4	37.0	8.0	16.0	4.0	M5
C	48	48	64	59	66	4	37.0	8.0	16.0	4.0	M5
	50	50	66	62	70	4	38.0	9.5	17.0	4.5	M6
	53	53	69	65	73	4	38.0	9.5	17.0	4.5	M6
	55	55	71	67	75	4	38.0	9.5	17.0	4.5	M6
	58	58	78	70	78	4	42.0	10.5	18.0	4.5	M6
	60	60	80	72	80	4	42.0	10.5	18.0	4.5	M6
D	63	63	83	75	83	4	42.0	10.5	18.0	4.5	M6
	65	65	85	77	85	4	42.0	10.5	18.0	4.5	M6
	68	68	88	81	90	4	41.5	11.0	18.5	4.5	M6
	70	70	90	83	92	4	48.5	11.5	19.0	5.0	M8
	75	75	99	88	97	4	48.5	11.5	19.0	5.5	M8
	80	80	104	95	105	4	48.5	11.5	19.0	5.5	M8
E	85	85	109	100	110	4	48.5	11.5	19.0	5.5	M8
	90	90	114	105	115	4	52.0	13.0	20.5	5.5	M8
	95	95	119	110	120	4	52.0	13.0	20.5	5.5	M8
F	100	100	124	115	125	4	52.0	13.0	20.5	5.5	M8

结构说明(Structure Description):
Equivalent to AES M010, Burgmann HJ92N
波形弹簧密封, 平衡型密封 (Wave spring design - balanced seal)

运行参数(Operating Limits):
温度(Temperature): -20---180°C
线速度(Speed): 15m/s
压力(Pressure): 25bar
标准尺寸(Standard size): 18 - 100mm

常用材料组合(Material):
密封唇(Seal ring): 石墨, 碳化硅, 氧化铝 (Car, Sic, SiC, TC)
辅助密封(Secundary seals): 丁腈橡胶, 氟橡胶等 (NBR, EPDM, Viton etc)
金属弹簧(Spring and metal parts): 304, 316, HAST.C

CUSTOMER:	www.asinoseal.com	ASINOSEAL CO.,LTD 张家港爱斯派机械密封有限公司
P.O. NO.:	Tel:+86-512-58227959 Fax:+86-512-58228759	
REF:	Mail:sales@asinoseal.com	Installation Drawing
DRAWN BY:	No.265 South Chang'An Rd,Zhangjiagang ,China	
CHECKED:		TYPE & SIZE:
APPVD:		AS-R92N
SCALE:	DATE:	PAGE:X/X





波形弹簧式机械密封
Component seal series (Wave spring type seals)

1	2	3	4	5	6	7	8			
Size: Metric	d	D1	D2	D3	L1	L2	M			
A	14	25	21	25	3	25.0	10.0	17.5	6	M5
	16	27	23	27	3	25.0	10.0	17.5	6	M5
	18	33	27	33	3	26.0	11.5	19.5	7	M5
	20	35	29	35	3	26.0	11.5	19.5	7	M5
	22	37	31	37	3	26.0	11.5	19.5	7	M5
	24	39	33	39	3	28.5	11.5	19.5	8	M5
	25	40	34	40	3	28.5	11.5	19.5	8	M5
	28	43	37	43	3	31.0	11.5	19.5	8	M6
B	30	45	39	45	3	31.0	11.5	19.5	8	M6
	32	47	42	48	3	31.0	11.5	19.5	8	M6
	33	48	42	48	3	31.0	11.5	19.5	8	M6
	35	50	44	50	3	31.0	11.5	19.5	8	M6
	38	55	49	56	4	31.0	14.0	22.0	8	M6
	40	57	51	58	4	31.0	14.0	22.0	8	M6
	43	60	54	61	4	31.0	14.0	22.0	8	M6
C	45	62	56	63	4	31.0	14.0	22.0	8	M6
	48	65	59	66	4	31.0	14.0	22.0	8	M6
	50	67	62	70	4	32.5	15.0	23.0	8	M6
	53	70	65	73	4	32.5	15.0	23.0	8	M6
	55	72	67	75	4	32.5	15.0	23.0	8	M6
	58	79	70	78	4	37.5	15.0	23.0	9	M8
D	60	81	72	80	4	37.5	15.0	23.0	9	M8
	63	84	75	83	4	37.5	15.0	23.0	9	M8
	65	86	77	85	4	37.5	15.0	23.0	9	M8
	68	89	81	90	4	34.5	18.0	26.0	9	M8
	70	91	83	92	4	42.0	18.0	26.0	9	M8
	75	99	88	97	4	42.0	18.0	26.0	10	M8
	80	104	95	105	4	41.8	18.2	26.2	10	M8
	85	109	100	110	4	41.8	18.2	26.2	10	M8
E	90	114	105	115	4	46.8	18.2	26.2	10	M8
	95	119	110	120	4	47.8	17.2	25.2	10	M8
F	100	124	115	125	4	47.8	17.2	25.2	10	M8

结构说明 (Structure Description):
Equivalent to Burgmann M7N seal
波簧弹簧设计, 亦可选小弹簧结构 (Wave spring design, Multiple spring design is also available)
弹簧是可加工, 为带泵送螺旋设计 (Pump screw design could be made for spring retainer)

运行参数 (Operating Limits):
温度 (Temperature): -20---180°C
转速 (Speed): 15m/s
压力 (Pressure): 12bar
标准尺寸 (Standard size): 16 - 100mm

常用材料组合 (Material):
密封环 (Seal rings): 石墨, 碳化硅, 氧化铝 (Car, Sic, Ssic, TiC)
辅助密封 (Secondary seals): 丁腈橡胶, 乙丙橡胶, 氟橡胶等 (NBR, EPDM, Viton etc.)
金属弹簧 (Spring and metal parts): 304, 316, HAST.C

CUSTOMER:	www.asinoseal.com	ASINOSEAL CO.,LTD
P.O. NO.:	Tel:+86-512-58227959	张家港爱斯迪密封材料有限公司
REF#:	Fax:+86-512-58228759	
DRAWN BY:	STA'D:	Mail:sales@asinoseal.com
CHECKED:		No.265 South Chang'An
APPVD:		Rd,Zhangjiagang ,China
SCALE:	DATE:	PAGE:X/X
		Installation Drawing
		TYPE & SIZE:
		AS-R7N





波形弹簧式机械密封
Component seal series (Wave spring type seals)

Size/Metric	D1	D2	D3	D6	D7	d1	L1	L2	L3	L5	L6	M
14	14	18	33	21	25	3	32.5	10.0	17.5	6.0	8.0	M5
16	16	20	35	23	27	3	32.5	10.0	17.5	6.0	8.0	M5
18	18	22	37	27	33	3	33.5	11.5	19.5	7.0	8.5	M5
20	20	24	39	29	35	3	33.5	11.5	19.5	5.5	8.5	M5
22	22	26	41	31	37	3	33.5	11.5	19.5	8.0	8.5	M5
24	24	28	43	33	39	3	36.0	11.5	19.5	5.5	8.5	M6
25	25	30	45	34	40	3	36.0	11.5	19.5	5.5	8.5	M6
28	28	33	48	37	43	3	38.5	11.5	19.5	8.0	8.5	M6
30	30	35	50	39	45	3	38.5	11.5	19.5	8.0	8.5	M6
32	32	38	55	42	48	3	38.5	11.5	19.5	8.0	8.5	M6
33	33	38	55	42	48	3	38.5	11.5	19.5	8.0	8.5	M6
35	35	40	57	44	50	3	38.5	11.5	19.5	8.0	8.5	M6
38	38	43	60	49	56	4	38.5	14.0	22.0	8.0	9.0	M6
40	40	45	62	51	58	4	38.5	14.0	22.0	8.0	9.0	M6
43	43	48	65	54	61	4	38.5	14.0	22.0	8.0	9.0	M6
45	45	50	67	56	63	4	38.5	14.0	22.0	8.0	9.0	M6
48	48	53	70	59	66	4	38.5	14.0	22.0	8.0	9.0	M6
50	50	55	72	62	70	4	42.5	15.0	23.0	8.0	10.0	M8
53	53	58	79	65	73	4	42.5	15.0	23.0	9.0	10.0	M8
55	55	60	81	67	75	4	42.5	15.0	23.0	9.0	10.0	M8
58	58	63	84	70	78	4	47.5	15.0	23.0	9.0	10.0	M8
60	60	65	86	72	80	4	47.5	15.0	23.0	9.0	10.0	M8
63	63	68	89	75	83	4	47.5	15.0	23.0	9.0	10.0	M8
65	65	70	91	77	85	4	47.5	15.0	23.0	9.0	10.0	M8
70	70	75	99	83	92	4	52.0	18.0	26.0	10.0	10.0	M8
75	75	80	104	88	97	4	52.0	18.0	26.0	10.0	10.0	M8
80	80	85	109	95	105	4	57.8	18.2	26.2	10.0	9.8	M8
85	85	90	114	100	110	4	56.8	18.2	26.2	10.0	9.8	M8
90	90	95	119	105	115	4	56.8	18.2	26.2	10.0	9.8	M8
95	95	100	124	110	120	4	57.8	17.2	25.2	10.0	10.8	M8
100	100	105	129	115	125	4	57.8	17.2	25.2	10.0	10.8	M8

结构说明:
Equivalent to Burgmann H7N seal
波簧密封设计, 亦可采用小弹簧, 大弹簧结构 (Wave spring design, Multiple or single spring design is also available)
弹簧可采用加工泵螺钉固定设计 (Pump screw design could be made for spring retainer)

运行参数(Operating Limits):
温度(Temperature): -20---180°C
线速度(Speed): 15m/s
压力(Pressure): 52bar
标准尺寸(Standard sizes): 14 - 100mm

常用材料组合(Material):
密封环(Geal rings): 石墨, 碳化硅, 氧化铝 (Car, Sic, Ssic, Tc)
辅助密封(Secondary seals): 丁腈橡胶, 乙丙橡胶, 氟橡胶等 (NBR, EPDM, Viton etc.)
金属零件(Spring and metal parts): 304, 316, HAST.C

CUSTOMER:	www.asinoseal.com	ASINOSEAL CO.,LTD
P.O. NO.:	Tel:+86-512-58227959	张家港爱斯迪机械密封有限公司
REF:	Fax:+86-512-58228759	
DRAWN BY:	STA'D:	Installation Drawing
CHECKED:		TYPE & SIZE:
APPVD:		AS-RH7N
SCALE:	DATE:	PAGE:X/X





Mechanical seal

小弹簧式机械密封

Component seal series(Multiple spring type seals)

Size/Metric	d	D6	D7	D3	d1	L1	L2	L3
18	18	27	33	33	3	38.0	11.5	19.5
20	20	29	35	35	3	38.0	11.5	19.5
22	22	31	37	37	3	38.0	11.5	19.5
24	24	33	39	39	3	38.0	11.5	19.5
25	25	34	40	40	3	38.0	11.5	19.5
28	28	37	43	43	3	39.0	11.5	19.5
30	30	39	45	45	3	39.0	11.5	19.5
32	32	42	48	47	3	39.0	11.5	19.5
33	33	42	48	48	3	39.0	11.5	19.5
35	35	44	50	50	3	39.0	11.5	19.5
38	38	49	56	55	4	41.0	14.0	22.0
40	40	51	58	57	4	42.0	14.0	22.0
43	43	54	61	60	4	42.0	14.0	22.0
45	45	56	63	62	4	42.0	14.0	22.0
48	48	59	66	65	4	42.0	14.0	22.0
50	50	62	70	67	4	43.0	15.0	23.0
53	53	65	73	70	4	43.0	15.0	23.0
55	55	67	75	72	4	43.0	15.0	23.0
58	58	70	78	79	4	56.0	15.0	23.0
60	60	72	80	81	4	56.0	15.0	23.0
63	63	75	83	84	4	55.0	15.0	23.0
65	65	77	85	86	4	55.0	15.0	23.0
68	68	81	90	89	4	55.0	18.0	26.0
70	70	83	92	91	4	56.0	18.0	26.0
75	75	88	97	99	4	56.0	18.0	26.0
80	80	95	105	104	4	56.0	18.2	26.2
85	85	100	110	109	4	56.0	18.2	26.2
90	90	105	115	114	4	56.0	18.2	26.2
95	95	110	120	119	4	56.0	17.2	25.2
100	100	115	125	124	4	56.0	17.2	25.2

结构说明 (Structure Description):
 双端面小弹簧密封 (Double seal, Multiple spring design). Equivalent to Burgmann M74-D type.
 泵壳密封加工泵壳密封设计 (Pump screw design available for spring retainer)

运行参数 (Operating Limits):
 温度 (Temperature): -20---180°C
 速度 (Speed): 15m/s
 压力 (Pressure): 12bar
 标准尺寸 (Standard size): 18 - 100mm

常用材料组合 (Material):
 密封环 (Seal rings): 石墨, 碳化硅, 氧化铝 (Car, SiC, SiC, TC)
 辅助密封 (Secondary seals): 丁腈橡胶, 乙丙橡胶, 氟橡胶等 (NBR, EPDM, Viton etc.)
 金属零件 (Spring and metal parts): 304, 316, HAST.C

CUSTOMER:	www.asinoseal.com	ASINOSEAL CO.,LTD
P.D. NO.:	Tel:+86-512-58227959	张家港爱斯密封材料有限公司
REF:	Fax:+86-512-58228759	
DRAWN BY:	STA'D: Mail:sales@asinoseal.com	Installation Drawing
CHECKED:	No.265 South Chang'An Rd.Zhangjiagang ,China	TYPE & SIZE:
APPVD:	SCALE: DATE: PAGE:X/X	AS-R74D





小弹簧式机械密封
Component seal series (Multiple spring type seals)

Size/Metric	d	d0	D3	D6	D7	d1	L8	L1	L2	L3
14	14	18	33	21	25	3	18	53.0	10.0	17.5
16	16	20	35	23	27	3	18	53.0	10.0	17.5
18	18	22	37	27	33	3	20	53.0	11.5	19.5
20	20	24	39	29	35	3	20	53.0	11.5	19.5
22	22	26	41	31	37	3	20	53.0	11.5	19.5
24	24	28	43	33	39	3	20	54.0	11.5	19.5
25	25	30	45	34	40	3	20	54.0	11.5	19.5
28	28	33	48	37	43	3	20	54.0	11.5	19.5
30	30	35	50	39	45	3	20	54.0	11.5	19.5
32	32	38	55	42	48	3	20	56.0	11.5	19.5
33	33	38	55	42	48	3	20	56.0	11.5	19.5
35	35	40	57	44	50	3	20	57.0	11.5	19.5
38	38	43	60	49	56	4	23	57.0	14.0	22.0
40	40	45	62	51	58	4	23	57.0	14.0	22.0
43	43	48	65	54	61	4	23	57.0	14.0	22.0
45	45	50	67	56	63	4	23	56.0	14.0	22.0
48	48	53	70	59	66	4	23	56.0	14.0	22.0
50	50	55	72	62	70	4	25	63.0	15.0	23.0
53	53	58	79	65	73	4	25	67.0	15.0	23.0
55	55	60	81	67	75	4	25	67.0	15.0	23.0
58	58	63	84	70	78	4	25	74.0	15.0	23.0
60	60	65	86	72	80	4	25	74.0	15.0	23.0
63	63	68	89	75	83	4	25	79.0	15.0	23.0
65	65	70	91	77	85	4	25	68.0	15.0	23.0
70	70	75	99	83	92	4	28	76.4	18.0	26.0
75	75	80	104	88	97	4	28	76.4	18.0	26.0
80	80	85	109	95	105	4	28	76.0	18.2	26.2
85	85	90	114	100	110	4	28	76.0	18.2	26.2
90	90	95	119	105	115	4	28	76.0	18.2	26.2
95	95	100	124	110	120	4	28	76.0	17.2	25.2
100	100	105	129	115	125	4	28	76.0	17.2	25.2

结构说明 (Structure Description):
 双端面小弹簧密封 (Double seal, Multiple spring design). Equivalent to Burgmann H74-D
 弹簧盖可加工为带泵盖密封设计 (Pump screw design is available for spring retainer)

运行参数 (Operating Limits):
 温度 (Temperature): -20---180°C
 转速 (Speed): 15m/s
 压力 (Pressure): 25bar
 标准尺寸 (Standard size): 14 - 100mm

常用材料组合 (Material):
 密封环 (Seal ring): 石墨, 碳化硅, 氧化铝 (Car, Sic, Ssic, TC)
 辅助密封 (Secondary seals): 丁腈橡胶, 乙丙橡胶, 氟橡胶等 (NBR, EPDM, Viton etc.)
 金属衬套 (Spring and metal parts): 304, 316, HAST.C

CUSTOMER:	www.asinoseal.com	ASINOSEAL CO.,LTD
P.O. NO.:	Tel:+86-512-58227959	张家港爱斯密封机械有限公司
REF:	Fax:+86-512-58228759	
DRAWN BY:	STA'D:	Installation Drawing
CHECKED:	Mail:sales@asinoseal.com	TYPE & SIZE:
APPVD:	No.265 Sou'N Chang'An	AS-RH74D
SCALE:	Rd,Zhongjiogang_China	
DATE:	PAGE:X/X	





小弹簧式机械密封
Component seal series (Multiple spring type seals)

Size/Metric	d	D3	D6	D7	L2	L3	L4	L8
20	20	34	36	42	18	35	23	25
22	22	36	38	44	18	35	23	25
24	24	38	40	46	18	35	23	25
25	25	39	41	47	18	35	23	25
28	28	42	44	50	18	35	23	25
30	30	44	46	52	18	35	23	25
32	32	46	48	54	18	35	23	25
33	33	47	49	55	18	35	23	25
35	35	49	51	57	18	35	23	25
38	38	54	58	64	20	38	25	27
40	40	56	60	66	20	38	25	27
42	42	58	62	68	20	38	25	27
43	43	59	63	69	20	38	25	27
45	45	61	65	71	20	38	25	27
48	48	64	68	74	20	38	25	27
50	50	66	70	76	20	39	25	27
52	52	68	72	78	20	40	25	27
53	53	69	73	79	20	40	25	27
55	55	71	75	81	20	40	25	27
58	58	76	83	89	22	41	28	30
60	60	78	85	91	22	41	28	30
62	62	80	87	93	22	41	28	30
63	63	81	88	94	22	41	28	30
65	65	83	90	96	22	41	28	30
68	68	86	93	99	24	41	30	32
70	70	90	95	101	24	42	30	32
75	75	95	104	110	24	42	30	32
80	80	100	109	115	25	42	31	33
85	85	105	114	120	25	43	31	33
90	90	110	119	125	25	45	31	33
95	95	115	124	130	25	45	31	33
100	100	120	129	135	25	45	31	33

结构说明 (Structure Description):
Equivalent to Flowsolve R0 type
小弹簧结构 (Multiple spring design)

运行参数 (Operating Limits):
温度 (Temperature): -20---180°C
线速 (Speed): 15m/s
压力 (Pressure): 10bar
标准尺寸 (Standard size): 20 - 100mm

常用材料组合 (Material):
密封环 (Seal rings): 石墨, 碳化硅, 氧化铝 (Car, Sic, Ssic, Tc)
辅助密封 (Secondary seals): 丁腈橡胶, 乙丙橡胶, 氟橡胶等 (NBR, EPDM, Viton etc.)
金属机封 (Spring and metal parts): 304, 316, HAST.C

CUSTOMER:	www.asinoseal.com	ASINOSEAL CO.,LTD
P.O. NO.:	Tel:+86-512-58227959	张家港爱斯迪机械密封有限公司
REF:	Fax:+86-512-58228759	
DRAWN BY:	STA'D:	Installation Drawing
CHECKED:		TYPE & SIZE:
APPVD:		AS-R0-A
SCALE:	DATE:	PAGE: X / X





小弹簧式机械密封
Component seal series(Multiple spring type seals)

1	2	3	4	5	6	7	8	
Size/Model	d	D3	D6	D7	D8	L3	L4	
20	20	34	29	35	3	35	13	21
22	22	36	31	37	3	35	13	21
24	24	38	33	39	3	35	13	21
25	25	39	34	40	3	35	13	21
28	28	42	37	43	3	35	13	21
30	30	44	39	45	3	35	13	21
32	32	46	42	48	3	35	13	21
33	33	47	42	48	3	35	13	21
35	35	49	44	50	3	35	13	21
38	38	54	50	56	4	38	13	21
40	40	56	52	58	4	38	13	21
43	43	59	55	61	4	38	13	21
45	45	61	57	63	4	38	13	21
48	48	64	60	66	4	38	13	21
50	50	66	62	68	4	39	13	21
53	53	69	65	71	4	40	13	21
55	55	71	67	73	4	40	13	21
58	58	76	70	79	4	41	16	24
60	60	78	72	81	4	41	16	24
63	63	81	75	84	4	41	16	24
65	65	83	77	86	4	41	16	24
68	68	86	81	90	4	41	16	24
70	70	90	83	92	4	42	16	24
75	75	95	88	97	4	42	16	24
80	80	100	96	105	4	42	16	24
85	85	105	101	110	4	43	16	24
90	90	110	106	115	4	45	16	24
95	95	115	111	120	4	45	16	24
100	100	120	116	125	4	45	16	24

结构说明 (Structure Description):
Equivalent to Flowserve R0 type seal
小弹簧密封 (Multiple spring design)

运行参数 (Operating Limits):
温度 (Temperature): -20---180°C
转速 (Speed): 15m/s
压力 (Pressure): 10bar
标准尺寸 (Standard size): 20 - 100mm

常用材料组合 (Material):
密封环 (Seal rings): 石墨, 碳化硅, 氧化铝 (Car, Sic, Ssic, TC)
辅助密封 (Secondary seals): 丁腈橡胶, 乙丙橡胶, 氟橡胶等 (NBR, EPDM, Viton etc.)
金属衬套 (Spring and metal parts): 304, 316, HAST C

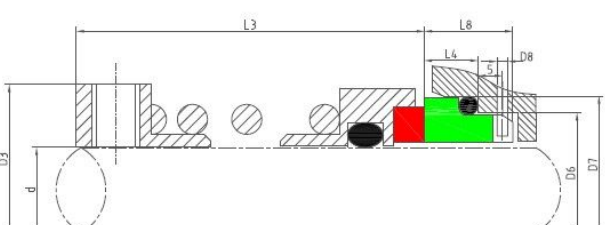
CUSTOMER:	www.asinoseal.com	ASINOSEAL CO.,LTD
P.O. NO.:	Tel:+86-512-58227959	张家港爱斯耐密封技术有限公司
REF:	Fax:+86-512-58228759	Installation Drawing
DRAWN BY:	STA'D:	TYPE & SIZE:
CHECKED:	Mail:sales@asinoseal.com	AS-R0-B
APPVD:	No.265 South Chang'An Rd,Zhangjiagang ,China	
SCALE:	DATE:	PAGE:X/X





大弹簧式机械密封 Component seal series(Single spring type seals)

Size/Metric	d	D3	D6	D7	D8	L3	L4	L8
A 18	18	32	27	33	3	35.0	10.0	17.0
A 20	20	34	29	35	3	35.0	10.0	17.0
A 22	22	36	31	37	3	35.0	10.0	17.0
A 24	24	38	33	39	3	40.0	10.0	17.0
A 25	25	39	34	40	3	40.0	10.0	17.0
A 28	28	42	37	43	3	40.0	10.0	17.0
A 30	30	44	39	45	3	40.0	10.0	17.0
B 32	32	46	42	48	3	45.0	10.0	17.0
B 33	33	47	42	48	3	45.0	10.0	17.0
B 35	35	49	44	50	3	45.0	10.0	17.0
B 38	38	54	49	56	4	44.0	11.0	18.0
B 40	40	56	51	58	4	44.0	11.0	18.0
C 43	43	59	54	61	4	49.0	11.0	18.0
C 45	45	61	56	63	4	49.0	11.0	18.0
C 48	48	64	59	66	4	49.0	11.0	18.0
C 50	50	66	62	70	4	47.0	13.0	20.0
C 53	53	69	65	73	4	57.0	13.0	20.0
D 55	55	71	67	75	4	57.0	13.0	20.0
D 58	58	78	70	78	4	57.0	13.0	20.0
D 60	60	80	72	80	4	57.0	13.0	20.0
D 63	63	83	75	83	4	57.0	13.0	20.0
D 65	65	85	77	85	4	67.0	13.0	20.0
D 68	68	88	81	90	4	64.7	15.3	20.0
D 70	70	90	83	92	4	64.7	15.3	20.0
E 75	75	99	88	97	4	64.7	15.3	20.0
E 80	80	104	95	105	4	74.3	15.7	22.5
E 85	85	109	100	110	4	74.3	15.7	22.5
E 90	90	114	105	115	4	74.3	15.7	22.5
E 95	95	119	110	120	4	74.3	15.7	22.5
F 100	100	124	115	125	4	74.3	15.7	22.5



结构说明 (Structure Description):
Equivalent to Burgmann 1527
大弹簧机械密封 (Single spring design)

运行参数 (Operating Limits):
温度 (Temperature): -20---180°C
线速 (Speed): 15m/s
压力 (Pressure): 10bar
标准尺寸 (Standard size): 18mm - 100mm

常用材料组合 (Material):
密封环 (Seal ring): 石墨, 碳化硅, 氧化铝 (Car: Sic, Ssic, TC)
辅助密封 (Secondary seals): 丁腈橡胶, 乙丙橡胶, 氟橡胶等 (NBR, EPDM, Viton etc.)
金属零件 (Spring and metal parts): 304, 316, HAST-C

CUSTOMER:	www.asinoseal.com	ASINOSEAL CO.,LTD
P.O. NO.:	Tel: +86-512-58227959	张家港爱斯诺机械密封有限公司
REF:	Fax: +86-512-58228759	
DRAWN BY:	STA'D:	Installation Drawing
CHECKED:		TYPE & SIZE:
APPVD:		AS-R1527
SCALE:	DATE:	PAGE: X / X





橡胶波纹管机械密封
Component seal series(Elastomer bellow seals)

	1	2	3	4	5	6	7	8
	Size/Inch(d)	Size/Metric(d)	D3	D6	D7	L3	L4	
A	0.500	12	23.80	19.05	25.40	30.16	7.93	
		14	27.76	23.80	31.75	33.32	10.28	
B	0.625	16	27.76	23.80	31.75	33.32	10.28	
	0.750	18	30.94	26.98	34.93	33.32	10.28	
C	0.875	20	34.11	30.15	38.10	34.93	10.28	
		22	34.11	30.15	38.10	34.93	10.28	
D	1.000	24	38.10	33.32	41.28	39.67	11.10	
	1.125	25	38.10	33.32	41.28	39.67	11.10	
E	1.250	28	41.28	36.50	44.44	41.28	11.10	
		30	46.02	39.70	47.63	41.28	11.10	
F	1.375	32	46.02	39.70	47.63	41.28	11.10	
	1.500	33	47.63	42.84	50.80	42.85	11.10	
G	1.625	35	47.63	42.84	50.80	42.85	11.10	
		38	50.80	46.05	53.98	42.85	11.10	
H	1.750	40	57.15	50.80	60.33	50.80	12.70	
	1.875	43	60.33	53.97	63.50	50.80	12.70	
I	2.000	45	60.33	53.97	63.50	50.80	12.70	
	2.125	48	63.50	57.15	66.68	53.98	12.70	
J	2.250	50	66.68	60.32	69.85	53.98	12.70	
	2.375	53	71.42	60.32	76.20	60.33	14.27	
K	2.500	55	74.60	61.90	79.38	60.33	14.27	
	2.625	60	77.77	67.39	82.55	63.50	14.27	
L	2.750	63	80.95	68.25	85.73	63.50	14.27	
	2.875	65	85.73	71.42	88.73	69.85	15.88	
M	3.000	70	88.90	74.60	88.90	69.85	15.88	
	3.125	73	92.08	77.77	95.25	73.03	15.88	
N	3.250	75	95.25	80.95	98.43	73.03	15.88	
	3.375	80	101.60	84.12	101.60	79.38	19.84	
O	3.500	85	107.95	90.47	107.95	79.38	19.84	
	3.625	90	114.30	96.82	114.30	82.55	19.84	
P	3.750	96	117.48	100.00	117.48	82.55	19.84	
	3.875	100	120.65	103.17	120.65	85.73	19.84	
	4.000		123.83	106.35	123.85	85.73	19.84	

Other big size dimensions are available in option. Please contact ASINOSEAL.

结构说明:
Equivalent to Johncrane Type 1, AES P05U, Vulcan A5, Flowserve S1 seal
橡胶波纹管密封 (Rubber bellows design)

运行参数(Operating Limits):
温度(Temperature): -20---120°C
转速(Speed): 15m/s
压力(Pressure): 16bar
标准尺寸(Standard size): 12 - 100mm or 0.5"-4.0"

常用材料组合(Material):
密封环(Seal rings): 石墨, 陶瓷, 碳化硅, 氧化铝 (Car: Ceramic, RBSiC, SiC, TiC)
波纹管(Secondary seals): 丁腈橡胶, 乙丙橡胶, 氟橡胶等 (NBR, EPDM, Viton etc.)
金属衬套(Spring and metal parts): 304, 316, TiAST.C

CUSTOMER:	www.asinoseal.com	ASINOSEAL CO. LTD
P.O. NO.:	Tel:+86-512-58227959	张家港爱斯诺机械有限公司
REF:	Fax:+86-512-58228759	
DRAWN BY:	STA'D:	Installation Drawing
CHECKED:		TYPE & SIZE:
APPVD:		AS-E01
SCALE:	DATE:	PAGE: X/X





橡胶波纹管机械密封
Component seal series(Elastomer bellow seals)

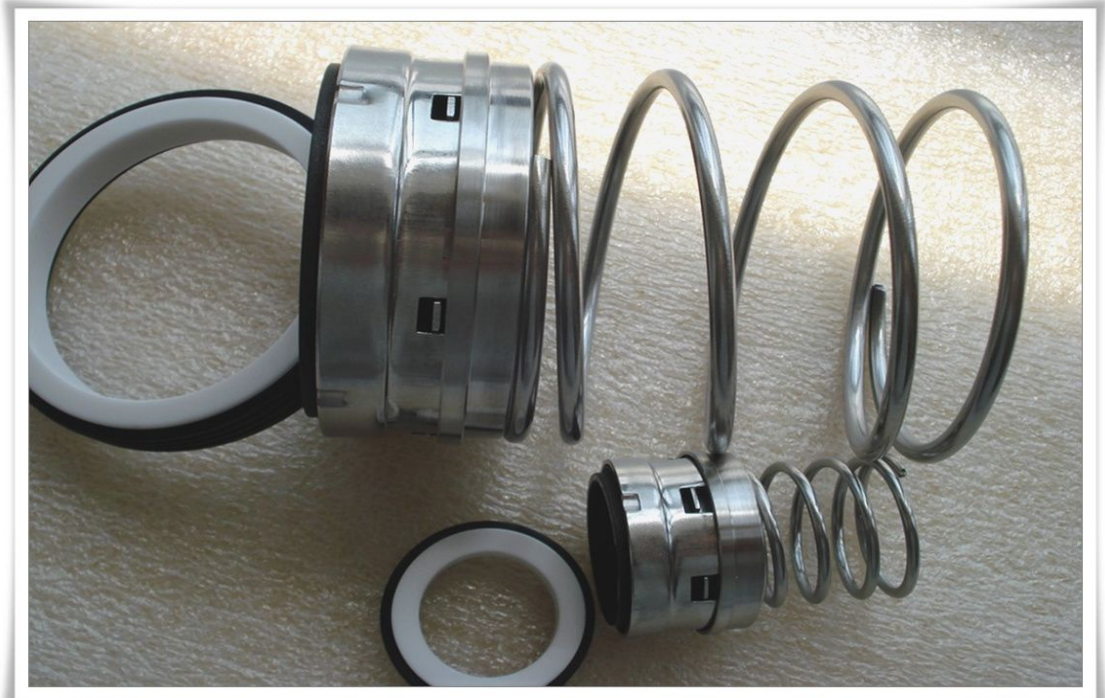
	1				2				3				4				5	6	7	8
	Size/Inch	d	D3	D6	D7	L3	L4	Size/Metric	d	D3	L3	L4	Size/Inch	d	D3	L3				
	0.375	9.5	22	11.0	24.60	44	8.7	14	14	29	44									
A	0.500	12.7	25	13.5	27.80	44	8.7	16	16	29	44									
	0.625	15.8	29	17.0	30.95	44	10.3	18	18	32	44									
	0.750	19.0	32	20.0	34.15	44	10.3	19	19	32	44									
	0.813	20.6	33	21.5	35.70	44	10.3	20	20	33	44									
	0.875	22.2	35	23.0	37.30	44	10.3	24	24	38	44									
B	1.000	25.4	38	26.5	40.50	44	10.3	25	25	38	44									
	1.125	28.5	46	29.5	47.65	60	11.9	27	27	46	60									
	1.250	31.7	49	32.5	50.80	60	11.9	28	28	46	60									
	1.375	34.9	52	36.5	54.00	60	11.9	29	29	46	60									
	1.500	38.1	56	39.5	57.15	60	11.9	30	30	49	60									
	1.625	41.2	59	42.5	60.35	60	11.9	32	32	49	60									
C	1.750	44.4	62	46.0	63.50	71	11.9	34	34	52	60									
	1.875	47.6	65	49.0	66.70	71	11.9	35	35	52	60									
	2.000	50.8	68	52.0	69.85	71	13.5	38	38	56	60									
	2.125	53.9	71	55.5	73.05	71	13.5	40	40	59	60									
	2.250	57.1	75	58.5	76.20	71	13.5	42	42	62	71									
	2.375	60.3	78	61.5	79.40	71	13.5	45	45	62	71									
D	2.500	63.5	81	65.0	82.55	71	13.5	48	48	65	71									
	2.625	66.6	86	68.0	92.10	70	15.9	50	50	68	71									
	2.750	69.8	89	71.0	95.25	70	15.9	54	54	71	71									
E	2.875	73.0	92	74.5	98.45	73	15.9	55	55	75	71									
	3.000	76.2	95	77.5	101.60	73	15.9	60	60	78	71									
	3.125	79.3	102	80.5	111.15	79	19.9	65	65	86	70									
	3.250	82.5	105	84.0	114.30	79	19.9	70	70	89	70									
	3.375	85.7	108	87.0	117.50	79	19.9	73	73	92	73									
	3.500	88.9	111	90.5	120.65	79	19.9	75	75	95	73									
	3.625	92.0	114	93.5	123.85	83	19.9	80	80	105	79									
	3.750	95.2	117	96.5	127.00	83	19.9	90	90	114	83									
F	3.875	98.4	121	100.0	130.20	86	19.9	95	95	118	83									
	4.000	101.6	124	103.0	133.35	86	19.9	100	100	124	86									

结构说明(Structure Description):
Equivalent to Johncrane Type 1A
橡胶波纹管密封 (Rubber bellows design)

运行参数(Operating Limits):
温度(Temperature): -20---120°C
转速(Speed): 15m/s
压力(Pressure): 14bar
标准尺寸(Standard size): 14 - 100mm or 0.375"-4.0"

常用材料组合(Material):
密封环(Seal ring): 石墨, 碳纤维, 陶瓷等 (Car,Sic,Ssic,TC)
辅助密封(Secondary seals): 丁腈橡胶, 乙丙橡胶, 氟橡胶等 (NBR,EPDM,Viton etc.)
金属零件(Spring and metal parts): 304,316,HAST C

CUSTOMER: _____ P.O. NO. : _____ REF: _____ DRAWN BY: _____ STA'D: _____ CHECKED: _____ APPVD: _____ SCALE: _____ DATE: _____	www.asinoseal.com Tel:+86-512-58227959 Fax:+86-512-58228759 Mail:sales@asinoseal.com No.265 South Chang'An Rd,Zhangjiagang ,China PAGE:X/XX
	ASINOSEAL CO.,LTD 张家港爱斯派机械有限公司 Installation Drawing TYPE & SIZE: AS-E01A





橡胶波纹管机械密封
Component seal series(Elastomer bellow seals)

Size/Inch	d	D5	D6	D7	L3	L4	L65
1.000	25.4	38.10	33.32	41.28	47.63	11.10	8.7
1.125	28.5	41.28	36.50	44.44	49.20	11.10	8.7
1.250	31.7	46.02	39.70	47.63	49.20	11.10	8.7
1.375	34.9	47.63	42.84	50.80	50.80	11.10	8.7
1.500	38.1	50.80	46.05	53.98	50.80	11.10	8.7
1.625	41.2	57.15	50.80	60.33	60.33	12.70	11.1
1.750	44.4	60.33	53.97	63.50	60.33	12.70	11.1
1.875	47.6	63.50	57.15	66.68	63.50	12.70	11.1
2.000	50.8	66.68	60.32	69.85	63.50	12.70	11.1
2.125	53.9	71.42	60.32	76.20	69.85	14.27	12.7
2.250	57.1	74.60	61.90	79.38	69.85	14.27	12.7
2.375	60.3	77.77	67.39	82.55	73.03	14.27	12.7
2.500	63.5	80.95	68.25	85.73	73.03	14.27	12.7
2.625	66.6	85.73	71.42	85.73	79.38	15.88	14.27
2.750	69.8	88.90	74.60	88.90	79.38	15.88	14.27
2.875	73.0	92.08	77.77	95.25	82.55	15.88	14.27
3.000	76.2	95.25	80.95	98.43	82.55	15.88	14.27
3.125	79.3	101.60	84.12	101.60	88.90	19.84	15.88
3.250	82.5	104.78	87.30	104.78	88.90	19.84	15.88
3.375	85.7	107.95	90.47	107.95	88.90	19.84	15.88
3.500	88.9	111.13	93.65	111.13	88.90	19.84	15.88
3.625	92.0	114.30	96.82	114.30	92.08	19.84	15.88
3.750	95.2	117.48	100.00	117.48	92.08	19.84	15.88
3.875	98.4	120.65	103.17	120.65	95.25	19.84	15.88
4.000	101.6	123.83	106.35	123.85	95.25	19.84	15.88

Other big size dimensions are available in option. Please contact ASINOSEAL.

结构说明 (Structure Description):
Equivalent to Johncrane Type 1B seal
橡胶波纹管机械密封 (Rubber bellows design)

运行参数 (Operating Limits):
温度 (Temperature): -20---120°C
速度 (Speed): 15m/s
压力 (Pressure): 25bar
标准尺寸 (Standard sizes): 1.0"-4.0"

常用材料组合 (Material):
密封环 (Seal rings): 石墨, 碳化硅, 陶瓷, 镍铬合金 (Car, Sic, Ssic, Ceramic, TC)
辅助密封 (Secondary seals): 丁腈橡胶, 乙丙橡胶, 氟橡胶等 (NBR, EPDM, VIron etc.)
金属件 (Spring and metal parts): 304, 316, HAIST.C

CUSTOMER:	www.asinoseal.com	ASINOSEAL CO.,LTD
P.O. NO.:	Tel:+86-512-58227959	张家港艾斯诺机械密封有限公司
REF:	Fax:+86-512-58228759	
DRAWN BY:	STA'D:	Installation Drawing
CHECKED:		TYPE & SIZE:
APPVD:		AS-E01B
SCALE:	DATE:	PAGE: X/X





橡胶波纹管机械密封
Component seal series(Elastomer bellow seals)

Size/Inch	Size/Metric	D5	D6	D7	L3	L4
0.500	12	30.14	19.05	25.40	20.64	7.93
	14	33.32	23.80	31.75	22.23	10.28
	16	33.32	23.80	31.75	22.23	10.28
0.750	18	36.50	26.98	34.93	22.23	10.28
	20	39.67	30.15	38.10	23.8	10.28
0.875	22	39.67	30.15	38.10	23.8	10.28
	24	45.50	33.32	41.28	25.4	11.10
1.000	25	45.50	33.32	41.28	25.4	11.10
	28	48.50	36.50	44.44	26.97	11.10
1.250	30	52.37	37.90	47.63	26.97	11.10
	32	52.37	37.90	47.63	26.97	11.10
	33	56.00	42.84	50.80	28.58	11.10
1.375	35	56.00	42.84	50.80	28.58	11.10
	38	56.00	46.05	53.98	28.58	11.10
1.625	40	59.20	50.80	60.38	34.93	12.70
	43	67.00	53.97	63.50	34.93	12.70
1.750	45	69.85	53.97	63.50	34.93	12.70
	48	73.03	57.15	66.68	38.1	12.70
2.000	49	73.03	60.32	69.85	38.1	12.70
	50	76.20	60.32	69.85	38.1	12.70
2.125	53	82.55	60.32	76.20	42.85	14.28
	55	85.73	61.90	79.38	42.85	14.28
2.250	60	88.90	67.39	82.55	46.02	14.28
	63	92.08	68.25	85.73	46.02	14.28
2.625	65	98.43	71.24	85.73	49.2	15.90
	70	101.60	74.60	88.90	49.2	15.90
2.875	73	104.78	77.77	95.25	52.37	15.90
	75	107.95	80.95	98.43	52.37	15.90
3.125	80	115.80	84.12	101.60	55.55	19.84
	85	119.05	87.30	104.78	55.55	19.84
3.375	85	122.22	90.47	107.95	55.55	19.84
	90	125.40	93.65	111.13	55.55	19.84
3.625	90	130.18	96.82	114.30	58.72	19.84
	95	133.35	100.00	117.48	58.72	19.84
3.875	100	138.10	103.17	120.65	58.72	19.84
	100	141.27	106.35	123.85	58.72	19.84
4.500	110	135.00			58.72	
	120	145.00			72	

结构说明(Structure Description):
Equivalent to AES P04U, Johncrane Type 2 seal
橡胶波纹管密封 (Rubber bellows design)

运行参数(Operating Limits):
温度(Temperature): -20---120°C
转速(Speed): 15m/s
压力(Pressure): 14bar
标准尺寸(Standard size): 12 - 100mm or 0.5"-4.0"

常用材料组合(Material):
密封环圈(S Seal ring): 石墨, 碳化硅, 氧化铝 (Car, Sic, Ssic, Tc)
辅助密封(Secondary seal): 丁腈橡胶, 乙丙橡胶, 氟橡胶等 (NBR, EPDM, Viton etc.)
金属零件(Spring and metal parts): 304, 316, HAST.C

CUSTOMER: www.asinoseal.com
P.O. NO. : Tel:+86-512-58227959
REF: Fax:+86-512-58228759
DRAWN BY: STA'D: Mail:sales@asinoseal.com
CHECKED: No.265 South Chang'An Rd,Zhangjiagang ,China
APPVD: DATE: PAGE:X/X

ASINOSEAL CO.,LTD
张家港爱斯诺机械密封有限公司
Installation Drawing
TYPE & SIZE:
AS-E02

Other big size dimensions are available in option. Please contact ASINOSEAL.





橡胶波纹管机械密封
Component seal series(Elastomer bellow seals)

Size/Metric	1					2					3					4				
	D3	D31	D7	L4	L3	Size/Inch	D3	D31	D7	L4	L3	Size/Inch	D3	D31	D7	L4	L3			
10	22.95	20.50	24.60	8.74	25.60	0.375	22.95	20.0	24.60	8.74	25.60									
11	23.90	22.80	27.79	8.74	25.60	0.500	23.90	22.8	27.79	8.74	25.60									
12	23.90	24.00	27.79	8.74	25.60	0.625	26.70	26.7	30.95	10.32	25.60									
13	26.70	24.20	30.95	10.32	25.60	0.750	31.10	30.4	34.15	10.32	25.60									
14	26.70	26.70	30.95	10.32	25.60	0.875	33.40	33.4	37.30	10.32	25.60									
15	26.70	26.70	30.95	10.32	25.60	1.000	43.20	39.3	40.50	10.32	25.60									
16	31.10	30.40	34.15	10.32	25.60	1.125	46.30	42.0	47.63	11.99	33.54									
18	31.10	30.40	34.15	10.32	25.60	1.250	49.40	45.8	50.80	11.99	33.54									
19	33.40	30.40	35.70	10.32	25.60	1.375	52.60	49.3	53.98	11.99	33.54									
20	33.40	33.40	37.30	10.32	25.60	1.500	55.80	52.8	57.15	11.99	33.54									
22	39.20	33.40	40.50	10.32	25.60	1.625	62.20	55.5	60.35	11.99	33.54									
24	39.20	38.00	40.50	10.32	25.60	1.750	66.00	61.0	63.50	11.99	40.68									
25	46.30	39.30	47.63	10.32	25.60	1.875	66.00	64.0	66.70	11.99	40.68									
28	49.40	42.00	50.80	11.99	33.54	2.000	73.00	66.0	69.85	13.50	40.68									
30	49.40	43.90	50.80	11.99	33.54	2.125	73.30	71.5	73.05	13.50	41.20									
32	49.40	45.80	53.98	11.99	33.54	2.250	78.40	79.6	76.2	13.50	41.20									
33	52.60	45.80	53.98	11.99	33.54	2.375	82.00	79.6	79.4	13.50	41.20									
35	52.60	49.30	53.98	11.99	33.54	2.500	84.90	81.5	82.55	13.50	41.20									
38	55.80	52.80	57.15	11.99	33.54	2.625	88.40	84.6	92.1	15.90	49.20									
40	62.20	55.80	60.35	11.99	33.54	2.750	92.60	90.0	95.25	15.90	49.20									
42	66.00	58.80	63.50	11.99	40.68	2.875	94.85	92.0	98.45	15.90	49.20									
43	66.00	58.80	63.50	11.99	40.68	3.000	101.90	96.8	101.65	15.90	49.20									
44	66.00	58.80	63.50	11.99	40.68															
45	66.00	61.00	63.50	11.99	40.68															
48	66.00	64.00	66.70	11.99	40.68															
50	71.65	66.00	69.85	13.50	40.68															
53	73.30	71.50	73.05	13.50	41.20															
55	78.40	71.50	76.00	13.50	41.20															
58	82.00	79.60	79.40	13.50	41.20															
60	82.00	79.60	79.40	13.50	41.20															
63	84.90	81.50	82.50	13.50	41.20															
65	88.40	84.60	92.10	15.90	49.20															
70	92.60	90.00	95.52	15.90	49.20															
73	94.85	92.00	98.45	15.90	49.20															
75	101.90	96.80	101.65	15.90	49.20															

结构说明:
Equivalent to AES P02/P02T ,Vulcan Type 20 and jahncrene type 21
橡胶波纹管结构 (Rubber bellows design)

运行参数(Operating Limits):
温度(Temperature): -20---120°C
转速(Speed): 15m/s
压力(Pressure): 10bar
标准尺寸(Standard size): 10 - 75mm or 0.375" - 3.0"

常用材料组合(Material):
密封唇(Seal rings): 石墨, 陶瓷, 碳化硅, 氧化铝 (Car,Ceramic,SiC,TC)
辅助密封(Secondary seals): 丁腈橡胶, 乙丙橡胶, 氟橡胶等 (NBR,EPDM,Viton etc.)
金属衬套(Spring and metal parts): 304, 316 HAST.C

CUSTOMER:		www.asinoseal.com	ASINOSEAL CO.,LTD
P.O. NO.:		Tel:+86-512-58227959	张家港爱斯迪机械密封有限公司
REF:		Fax:+86-512-58228759	
DRAWN BY:	STA'D:	Mail:sales@asinoseal.com	Installation Drawing
CHECKED:		No.265 South Chang'An	TYPE & SIZE:
APPVD:		Rd,Zhangjiagang ,China	AS-E20&E20T
SCALE:	DATE:	PAGE:X/X	





橡胶波纹管机械密封
Component seal series(Elastomer bellow seals)

Size/inch	d	D3	D31	D6	D7	L3	L4
0.500	12.7	24.00	22.80	19.05	25.40	20.62	7.95
0.625	15.8	26.70	26.70	23.80	31.75	22.23	10.31
0.750	19.1	31.20	30.40	26.97	34.93	22.23	10.31
0.875	22.2	33.55	33.40	30.15	38.10	23.80	10.31
1.000	25.4	43.20	39.30	33.32	41.28	25.40	11.10
1.125	28.6	46.50	42.00	36.50	44.45	26.97	11.10
1.250	31.7	49.50	45.80	39.70	47.63	26.97	11.10
1.375	34.9	52.70	49.30	42.85	50.80	28.58	11.10
1.500	38.1	56.00	52.80	46.05	53.98	28.58	11.10
1.625	41.2	62.20	55.50	50.80	60.33	34.93	12.70
1.750	44.4	66.00	61.00	53.97	63.50	34.93	12.70
1.875	47.6	66.00	64.00	57.15	66.68	38.10	12.70
2.000	50.8	73.00	66.00	60.33	69.85	38.10	12.70
2.125	53.9	73.50	71.50	60.33	76.20	42.85	14.27
2.250	57.1	79.60	79.60	61.90	79.38	42.85	14.27
2.375	60.3	82.00	79.60	65.10	82.55	46.05	14.27
2.500	63.5	85.00	81.50	68.25	85.73	46.05	14.27
2.625	66.6	88.50	84.60	71.42	85.73	49.20	15.88
2.750	69.8	92.70	90.00	74.60	88.90	49.20	15.88
3.000	76.2	102.00	96.80	80.95	98.40	52.37	15.88

结构说明 (Structure Description):
Equivalent to AES P04/P04T, Johncrane Type 21
橡胶波纹管密封 (Rubber bellows design)

运行参数 (Operating Limits):
温度 (Temperature): -20---120°C
速度 (Speed): 15m/s
压力 (Pressure): 10bar
标准尺寸 (Standard sizes): 10 - 100mm

常用材料组合 (Material):
密封环 (Seal ring): 石墨, 陶瓷, 碳化硅, 氧化铝 (Car, Ceramic, Sic, Ssic, TiC)
密封材料 (Secondary seals): 丁腈橡胶, 乙丙橡胶, 氟橡胶等 (NBR, EPDM, Viton etc.)
金属零件 (Spring and metal parts): 304, 316, HASTC

CUSTOMER:	www.asinoseal.com	ASINOSEAL CO.,LTD
P.O. NO.:	Tel:+86-512-58227959	张家港爱斯诺机械密封有限公司
REF:	Fax:+86-512-58228759	
DRAWN BY:	STA'D: Mail:sales@asinoseal.com	Installation Drawing
CHECKED:	No.265 South Chang'an Rd,Zhangjiagang ,China	TYPE & SIZE:
APPVD:		AS-E21&E21T
SCALE:	DATE: PAGE:X/X	





橡胶波纹管机械密封
Component seal series(Elastomer bellow seals)

Size/Metric	d	D5	D6	D7	L3	L4
10	10	20.05	17	21	23.9	8.6
12	12	21.70	19	23	23.9	8.6
14	14	24.50	21	25	26.4	8.6
16	16	26.65	23	27	26.4	8.6
18	18	30.35	27	33	27.5	10.0
20	20	31.75	29	35	27.5	10.0
22	22	33.55	31	37	27.5	10.0
24	24	38.30	33	39	30.0	10.0
25	25	38.30	34	40	30.0	10.0
28	28	42.20	37	43	32.5	10.0
30	30	43.95	39	45	32.5	10.0
32	32	45.70	42	48	32.5	10.0
33	33	46.75	42	48	32.5	10.0
35	35	49.10	44	50	32.5	10.0
38	38	52.40	49	56	34.0	11.0
40	40	55.70	51	58	34.0	11.0
43	43	58.80	54	61	34.0	11.0
45	45	61.20	56	63	34.0	11.0
48	48	64.35	59	66	34.0	11.0
50	50	67.35	62	70	34.5	13.0
53	53	70.65	65	73	34.5	13.0
55	55	71.65	67	75	34.5	13.0
58	58	78.40	70	78	39.5	13.0
60	60	78.40	72	80	39.5	13.0
63	63	81.50	75	83	39.5	13.0
65	65	84.30	77	85	39.5	13.0
68	68	89.65	81	90	37.2	15.3
70	70	89.65	83	92	44.7	15.3
75	75	96.80	88	97	44.7	15.3
80	80	104.00	95	105	44.3	15.7
85	85	107.95	100	110	44.3	15.7
90	90	111.10	105	115	49.3	15.7
95	95	119.00	110	120	49.3	15.7
100	100	124.00	115	125	49.3	15.7

结构说明 (Structure Description):
Equivalent to AES P03,Burgmann MG912,Johncrane 521,Vulcon 24
橡胶波纹管密封 (Rubber bellows design)

运行参数 (Operating Limits):
温度 (Temperature): -20---120°C
线速 (Speed): 15m/s
压力 (Pressure): 10bar
标准尺寸 (Standard sizes): 10 - 100mm

常用材料组合 (Material):
密封环 (Seal rings): 石墨, 碳化硅, 氧化铝 (Car,Ceramic,Sic,Ssic,TiC)
辅助密封 (Secondary seals): 丁腈橡胶, 乙丙橡胶, 氟橡胶等 (NBR,EPDM,Viton etc)
金属零件 (Spring and metal parts): 304,316,HAIST.C

CUSTOMER:	www.asinoseal.com	ASINOSEAL CO.,LTD
P.O. NO.:	Tel:+86-512-58227959	张家港爱斯诺机械密封有限公司
REF:	Fax:+86-512-58228759	Installation Drawing
DRAWN BY:	STA'D: Mail-sales@asinoseal.com	TYPE & SIZE:
CHECKED:	No.265 South Chang'An Rd,Zhangjiagang ,China	AS-E24
APPVD:	DATE:	PAGE X/X
SCALE:		





橡胶波纹管机械密封
Component seal series(Elastomer bellow seals)

Size/Metric	D0	D7	L3	L4	Size/Inch	d	D0	D7	L3	L4
8	18.20	21	11.2	7	0.375	9.5	23.5	22.22	22.2	6.4
9	18.20	24	16.2	7	0.500	12.7	26.0	25.40	22.2	6.4
10	20.60	24	16.2	7	0.625	15.8	30.0	31.75	23.8	8.7
11	20.60	24	16.2	7	0.750	19.0	32.5	34.92	23.8	8.7
12	21.80	26	17.2	7	0.875	22.2	37.5	38.10	25.4	8.7
13	21.80	26	17.2	7	1.000	25.4	44.0	41.27	27.0	9.5
14	26.40	28	18.2	7	1.125	28.5	48.0	44.45	28.6	9.5
15	26.40	28	18.2	7	1.250	31.7	50.0	47.62	28.6	9.5
16	26.40	32	19.2	8	1.375	34.9	54.5	50.80	30.2	9.5
17	28.50	32	19.2	8	1.500	38.1	58.5	53.97	30.2	9.5
18	29.50	35	19.2	8	1.625	41.2	64.0	60.32	36.5	11.1
19	29.50	35	19.2	8	1.750	44.4	67.0	63.50	36.5	11.1
20	31.60	38	20.2	8	1.875	47.6	71.0	66.67	39.7	11.1
22	33.60	40	20.2	8	2.000	50.8	73.5	69.85	39.7	11.1
25	39.60	44	20.2	9						
28	45.00	46	31.2	9						
30	46.60	50	22.2	9						
32	46.60	54	24.2	9						
35	50.80	58	26.2	10						
38	54.30	60	27.2	10						
40	57.30	64	28.2	10						
45	61.30	66	30.2	10						
50	67.80	72	32.2	10						

结构说明(Structure Description):
Equivalent to Eagle burghmann EA560(A)
橡胶波纹管密封 (Rubber bellows design)

运行参数(Operating Limits):
温度(Temperature): -20---120°C
转速(Speed): 15m/s
压力(Pressure): 10bar
标准尺寸(Standard sizes): 8 - 50mm or 0.375" - 2.0"

作用材料组合(Material):
密封环(seal ring): 石墨, 陶瓷, 碳化硅 (Car Ceramic, SiC, SiC, TC)
辅助密封(Secondary seal): 丁腈橡胶, 乙丙橡胶, 氟橡胶等 (NBR, EPDM, Viton etc.)
金属弹簧(Spring and metal parts): 304, 316, HAST.C

CUSTOMER:	www.asinoseal.com	ASINOSEAL CO.,LTD
P.O. NO.:	Tel:+86-512-58227959	张家港爱斯诺机械密封有限公司
REF:	Fax:+86-512-58228759	Installation Drawing
DRAWN BY:	STA'D:	TYPE & SIZE:
CHECKED:	Mail:sales@asinoseal.com	AS-E560(A)
APPVD:	No.265 South Chang'An Rd,Zhangjiagang ,China	
SCALE:	DATE:	PAGE:X/X





橡胶波纹管机械密封
Component seal series(Elastomer bellow seals)

Size/Metric	d	D3	D7	L3	L4
14	14	27.5	30	19.0	5.0
16	16	28.5	32	21.0	5.0
18	18	31.2	35	22.5	7.5
20	20	31.7	35	21.0	8.0
25	25	40.2	40	25.5	8.0
28	28	44.1	43	25.5	8.0
30	30	45.1	45	25.5	9.0
32	32	49.0	48	33.5	9.0
33	33	49.0	48	33.5	9.0
35	35	50.2	50	33.5	9.0
38	38	55.3	56	33.5	9.0
40	40	57.0	58	33.5	9.0
43	43	60.7	61	36.5	9.5
45	45	62.5	63	38.0	9.5
48	48	66.5	66	38.0	9.5
50	50	68.6	70	38.0	9.5
53	53	70.8	73	41.0	9.5
55	55	72.4	75	41.0	9.5
58	58	80.0	78	42.0	9.5
60	60	83.0	80	42.0	9.5
65	65	87.2	85	42.0	10.0
70	70	91.6	92	45.0	11.0
75	75	99.4	97	47.0	12.0
80	80	104.6	104	55.0	12.0
85	85	111.0	109	64.0	12.0
90	90	113.0	114	66.0	12.0

结构说明 (Structure Description):
橡胶波纹管密封 (Rubber bellows design)

运行参数 (Operating Limits):
温度 (Temperature): -20---120°C
转速 (Speed): 15m/s
压力 (Pressure): 10bar
标准尺寸 (Standard size): 10 - 100mm

管壳材料组合 (Material):
管壳密封 (Seal rings): 石墨, 陶瓷, 铜钨, 镍钨 (Car: Ceramic, Sic, Sic, TC)
辅助密封 (Secondary seals): 丁腈橡胶, 乙丙橡胶, 氟橡胶等 (NBR, EPDM, Viton etc.)
金属衬套 (Spring and metal parts): 304, 316, HAST-C

CUSTOMER:	www.asinoseal.com	ASINOSEAL CO., LTD
P.O. NO.:	Tel:+86-512-58227959	张家港爱斯迪机械密封有限公司
REF:	Fax: +86-512-58228759	
DRAWN BY:	STA'D:	Installation Drawing
CHECKED:		TYPE & SIZE:
APPVD:		AS-EBIA
SCALE:	DATE:	PAGE: X/X





橡胶波纹管机械密封
Component seal series(Elastomer bellow seals)

Size/Metric	d	D3	D6	D7	L3	L31	L32	L4
10	10	20	15	21	15	27.5	35.0	5.0
12	12	22	17	23	15	26.5	34.0	6.0
14	14	24	19	25	15	29.0	34.0	6.0
15	15	25	20	26	15	29.0	34.0	6.0
16	16	26	23	27	15	29.0	34.0	6.0
18	18	32	25	33	20	31.5	39.0	6.0
20	20	34	27	35	20	31.5	39.0	6.0
22	22	36	29	37	20	31.5	39.0	6.0
24	24	38	31	39	20	34.0	44.0	6.0
25	25	39	32	40	20	34.0	44.0	6.0
28	28	42	35	43	26	36.5	44.0	6.0
30	30	44	37	45	26	35.5	43.0	7.0
32	32	46	40	48	26	35.5	48.0	7.0
33	33	47	40	48	26	35.5	48.0	7.0
35	35	49	42	50	26	34.5	47.0	8.0
38	38	54	47	56	30	37.0	47.0	8.0
40	40	56	49	58	30	37.0	47.0	8.0
43	43	59	52	61	30	37.0	52.0	8.0
45	45	61	54	63	30	37.0	52.0	8.0
48	48	64	57	66	30	35.0	50.0	10.0
50	50	66	60	70	30	37.5	50.0	10.0
53	53	69	63	73	30	37.5	60.0	10.0
55	55	71	65	75	30	37.5	60.0	10.0
58	58	78	68	78	33	42.5	60.0	10.0
60	60	80	70	80	33	40.5	58.0	12.0
63	63	83	73	83	33	40.5	58.0	12.0
65	65	85	75	85	33	40.5	68.0	12.0
68	68	88	79	90	33	40.5	68.0	12.0
70	70	90	81	92	33	48.0	68.0	12.0
75	75	99	86	97	40	48.0	68.0	12.0
80	80	104	92	105	40	47.5	77.5	12.5
85	85	109	97	110	40	47.5	77.5	12.5
90	90	114	102	115	40	52.5	77.5	12.5
95	95	119	117	120	40	52.5	77.5	12.5
100	90	124	122	125	40	52.5	77.5	12.5

结构说明 (Structure Description):
Equivalent to AES B05/52/53, Johncrane 2100 series
橡胶波纹管密封 (Rubber bellows design)

运行参数 (Operating Limits):
温度 (Temperature): -20---120°C
转速 (Speed): 15m/s
压力 (Pressure): 18bar
标准尺寸 (Standard size): 10 - 100mm

常用材料组合 (Material):
密封环 (Seal ring): 石墨, 碳化硅, 陶瓷, 氧化铝 (Car, SiC, SiC, Ceramic, TC)
辅助密封 (Secondary seals): 丁腈橡胶, 乙丙橡胶, 氟橡胶等 (NBR, EPDM, Viton etc.)
金属衬套 (Spring and metal parts): 304, 316, HAST.C

CUSTOMER:	www.asinoseal.com	ASINOSEAL CO.,LTD
P.O. NO.:	Tel:+86-512-58227959	张家港爱斯迪机械密封有限公司
REF:	Fax:+86-512-58228759	
DRAWN BY:	STA'D: Mail: sales@asinoseal.com	Installation Drawing
CHECKED:	No.265 South Chang'An Rd,Zhangjiagang ,China	TYPE & SIZE:
APPVD:		AS-E210 Series
SCALE:	DATE:	PAGE:X/X





橡胶波纹管机械密封
Component seal series(Elastomer bellow seals)

	1	2	3	4	5	6	7	8	
Size/Metric	d	D3	D6	D7	L2	L31	L32	L33	L4
A	10	22.5	17	21	14.5	25.9	33.4	25.0	6.6
	12	25.0	19	23	15.0	25.9	33.4	25.0	6.6
	14	28.5	21	25	17.0	28.4	33.4	25.0	6.6
	15	28.5	-	-	17.0	28.4	33.4	25.0	-
	16	28.5	23	27	17.0	28.4	33.4	25.0	6.6
	18	32.0	27	33	19.5	30.0	37.5	25.0	7.5
	19	37.0	-	-	21.5	30.0	37.5	25.0	-
	20	37.0	29	35	21.5	30.0	37.5	25.0	7.5
B	22	37.0	31	37	21.5	30.0	37.5	25.0	7.5
	24	42.5	33	39	22.5	32.5	42.5	25.0	7.5
	25	42.5	34	40	23.0	32.5	42.5	25.0	7.5
	28	49.0	37	43	26.5	35.0	42.5	33.0	7.5
	30	49.0	39	45	26.5	35.0	42.5	33.0	7.5
	32	53.5	42	48	27.5	35.0	47.5	33.0	7.5
C	33	53.5	42	48	27.5	35.0	47.5	33.0	7.5
	35	57.0	44	50	28.5	35.0	47.5	33.0	7.5
	38	59.0	49	56	30.0	36.0	46.0	33.0	9.0
	40	62.0	51	58	30.0	36.0	46.0	33.0	9.0
	42	65.5	-	-	30.0	36.0	51.0	41.0	-
	43	65.5	54	61	30.0	36.0	51.0	41.0	9.0
D	45	68.0	56	63	30.0	36.0	51.0	41.0	9.0
	48	70.5	59	66	30.5	36.0	51.0	41.0	9.0
	50	74.0	62	70	30.5	38.0	50.5	41.0	9.5
	53	78.5	65	73	33.0	36.5	59.0	41.0	11.0
	55	81.0	67	75	35.0	36.5	59.0	41.0	11.0
	58	85.5	70	78	37.0	41.5	59.0	41.0	11.0
E	60	88.5	72	80	38.0	41.5	59.0	41.0	11.0
	65	93.5	77	85	40.0	41.5	69.0	49.0	11.0
	68	96.5	81	90	40.0	41.2	68.7	49.0	11.3
	70	99.5	83	92	40.0	48.7	68.7	49.0	11.3
	75	107.0	88	97	40.0	48.7	68.7	52.0	11.3
	80	112.0	95	105	40.0	48.0	78.0	56.0	12.0
F	85	120.0	100	110	41.0	46.0	76.0	56.0	14.0
	90	127.0	105	115	45.0	51.0	76.0	59.0	14.0
	95	132.0	110	120	46.0	51.0	76.0	59.0	14.0
	100	137.0	115	125	47.0	51.0	76.0	62.0	14.0

结构说明 (Structure Description):
Equivalent to Burgmann MG1, MG1S20, MG12, MG13 seal
橡胶波纹管密封 (Rubber bellows design)

运行参数 (Operating Limits):
温度 (Temperature): -20---120°C
转速 (Speed): 10m/s
压力 (Pressure): 12bar
标准尺寸 (Standard size): 10 - 100mm

常用材料组合 (Material):
密封环 (Seal ring): 不锈钢, 碳化钨, 氧化铝 (Car, SiC, SiC, Ti)
辅助密封 (Secondary seals): 丁腈橡胶, 乙丙橡胶, 氟橡胶等 (NBR, EPDM, Viton etc.)
金属零件 (Spring and metal parts): 304, 316, HAST C

CUSTOMER:	www.asinoseal.com	ASINOSEAL CO.,LTD
P.O. NO.:	Tel:+86-512-58227959	张家港爱斯密封材料有限公司
REF:	Fax:+86-512-58228759	
DRAWN BY:	STA'D: Mail:sales@asinoseal.com	Installation Drawing
CHECKED:	No.265 South Chang'An Rd,Zhangjiagang,China	TYPE & SIZE:
APPVD:		AS-EMG Series
SCALE:	DATE:	PAGE:X/X





橡胶波纹管机械密封
Component seal series(Elastomer bellow seals)

Size/Metric	d	D3	D6	D7	L3	L4	L6
14	14	24	21	25	23.0	12.0	12.8
16	16	26	23	27	23.0	12.0	12.8
18	18	32	27	33	24.0	13.5	14.5
20	20	34	29	35	24.0	13.5	14.5
22	22	36	31	37	24.0	13.5	14.5
24	24	38	33	39	26.7	13.3	14.3
25	25	39	34	40	27.0	13.0	14.0
28	28	42	37	43	30.0	12.5	13.5
30	30	44	39	45	30.5	12.0	13.0
32	32	46	42	48	30.5	12.0	13.0
33	33	47	42	48	30.5	12.0	13.0
35	35	49	44	50	30.5	12.0	13.0
38	38	54	49	56	32.0	13.0	14.0
40	40	56	51	58	32.0	13.0	14.0
43	43	59	54	61	32.0	13.0	14.0
45	45	61	56	63	32.0	13.0	14.0
48	48	64	59	66	32.0	13.0	14.0
50	50	66	62	70	34.0	13.5	14.5
53	53	69	65	73	34.0	13.5	14.5
55	55	71	67	75	34.0	13.5	14.5
58	58	78	70	78	39.0	13.5	14.2
60	60	80	72	80	39.0	13.5	14.2
63	63	83	75	83	39.0	13.5	14.2
65	65	85	77	85	39.0	13.5	14.2
68	68	88	81	90	39.0	13.5	14.2
70	70	89	83	92	45.5	14.5	15.2
75	75	96	88	97	45.5	14.5	15.2
80	80	104	95	105	45.0	15.0	15.7
85	85	108	100	110	45.0	15.0	15.7
90	90	114	105	115	50.0	15.0	15.7
95	95	118	110	120	50.0	15.0	15.7
100	100	124	115	125	50.0	15.0	15.7

结构说明(Structure Description):
Equivalent to AES B07,Johncrane 502 seal
橡胶波纹管密封 (Rubber bellows design)

运行参数(Operating Limits):
温度(Temperature): -20---120°C
线速(Speed): 15m/s
压力(Pressure): 25bar
标准尺寸(Standard size): 14 - 100mm

常用材料组合(Material):
密封环(Seat ring): 石墨, 碳化硅, 氧化铝
波纹管(Sell rings): 氟橡胶, 乙丙橡胶, 氯丁橡胶 (NBR, EPDM, Viton etc.)
金属零件(Spring and metal parts): 304, 316, HAST C

CUSTOMER:	www.asinoseal.com	ASINOSEAL CO.,LTD
P.O. NO.:	Tel:+86-512-58227959	张家港爱斯诺机械有限公司
REF:	Fax:+86-512-58228759	
DRAWN BY:	STA'D: Mail:sales@asinoseal.com	Installation Drawing
CHECKED:	No.265 South Chang'An Rd,Zhangjiagang ,China	TYPE & SIZE:
APPVD:		AS-E502
SCALE:	DATE:	PAGE:X/X

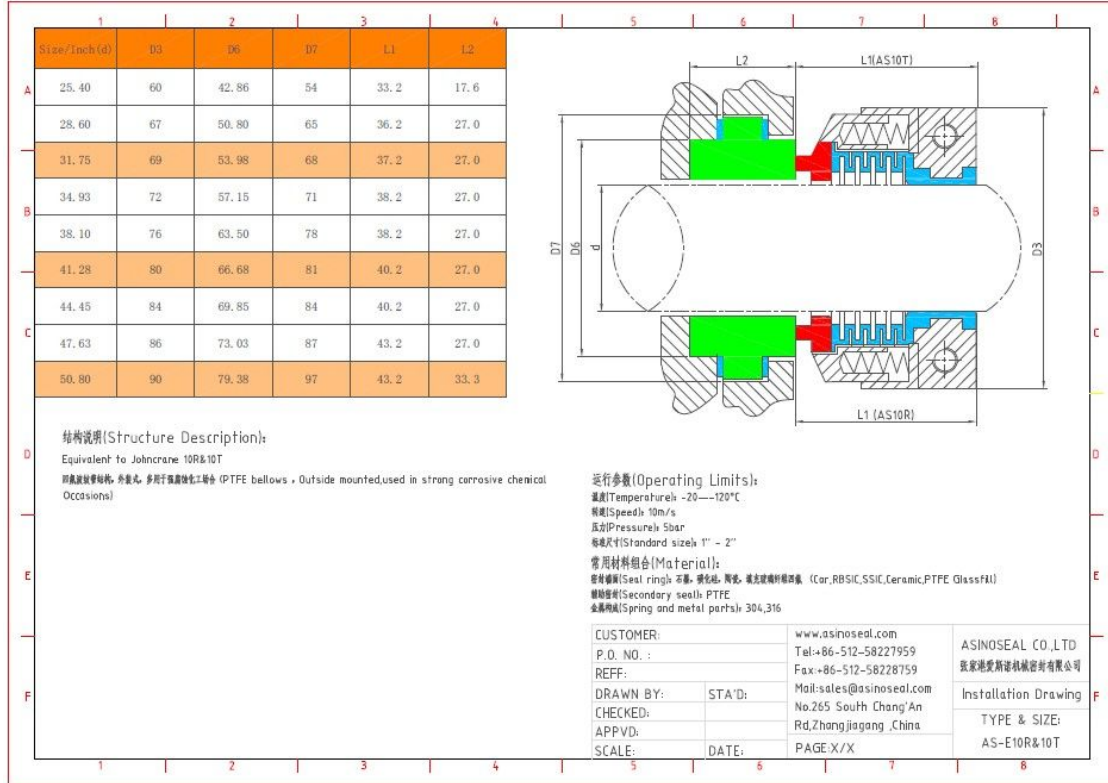




Mechanical seal

四氟波纹管机械密封

Component seal series(Teflon bellow seals)





四氟波纹管机械密封
Component seal series(Teflon bellow seals)

1	2	3	4	5	6	7	8
Size/Inch(d)	D3	D6	D7	L1	L3	L2	
25.40	60	42.86	54	42	45	17.5	
28.60	67	46.03	60	42	45	27.0	
31.75	69	50.80	65	42	45	27.0	
34.93	72	53.98	68	42	45	27.0	
38.10	76	57.15	71	42	45	27.0	
41.28	80	63.50	78	42	45	27.0	
44.45	84	66.68	81	44	46	27.0	
47.63	86	69.85	84	44	46	27.0	
50.80	90	73.03	87	46	46	27.0	
53.98	95	79.38	97	46	46	33.5	
57.15	98	82.55	100	46	46	33.5	
60.30	100	85.73	103	46	46	33.5	
Size/Metric (d)	D3	D6	D7	L1	L3	L2	
25	60	47.0	60	42	45	27	
30	67	53.0	67	42	45	27	
32	69	50.7	64	42	45	27	
35	72	57.0	70	42	45	27	
40	78	62.0	76	42	45	26	
45	84	67.0	82	44	46	27	
50	88	72.0	86	46	46	27	
55	95	77.0	90	46	46	27	
60	100	82.0	95	46	46	27	
65	105	87.0	100	46	46	27	

运行参数(Operating Limits):
 温度(Temperature): -20---120°C
 转速(Speed): 10m/s
 压力(Pressure): 5bar
 标准尺寸(Standard size): 25 - 65mm or 1" - 2.375"

常用材料组合(Material):
 密封环圈(Seal rings): 石墨, 碳化硅, 陶瓷, 氟塑料, 聚四氟乙烯, 氧化铝, 氧化铝陶瓷, 氧化铝陶瓷 (Car, Sic, Ssic, Ceramic, PTFE, GlassfIII)
 辅助密封(Secondary seals): PTFE
 金属弹簧(Spring and metal parts): 304,316

结构说明 (Structure Description):
 Equivalent to Johncrane WB2 seal
 四氟波纹管机械密封, 外装式, 多用于腐蚀性化工场合 (PTFE bellows design, Outside mounted, used in strong corrosive chemical occasions).

CUSTOMER:	www.asinoseal.com	ASINOSEAL CO.,LTD
P.O. NO.:	Tel:+86-512-58227959	张家港爱斯耐机械密封有限公司
REF:	Fax:+86-512-58228759	
DRAWN BY:	STA'D:	Installation Drawing
CHECKED:		TYPE & SIZE:
APPVD:		AS-EWB2
SCALE:	DATE:	PAGE:X/X





小弹簧式机械密封 Component seal series (PTFE Wedge seals)

	1	2	3	4	5	6	7	8
Size/Inch	d	D3	D6	D7	L3	L4		
A	0.500	12.7	26.7	13.4	25.40	20.62	7.9	
	0.625	15.8	30.66	16.6	31.75	19.05	10.3	
	0.750	19.0	33.83	19.7	34.93	22.23	10.3	
	0.875	22.2	37	22.9	38.10	23.80	10.3	
	1.000	25.4	40.1	26.1	41.28	25.40	11.1	
	1.125	28.5	43.36	29.3	44.45	26.97	11.1	
	1.250	31.7	48.13	32.4	47.63	26.97	11.1	
B	1.375	34.9	51.3	35.6	50.80	28.58	11.1	
	1.500	38.1	54.48	38.8	53.98	28.58	11.1	
	1.625	41.2	60.83	42.4	60.33	34.93	12.7	
	1.750	44.4	64	45.5	63.50	34.93	12.7	
	1.875	47.6	65.58	48.7	66.68	34.93	12.7	
	2.000	50.8	70.36	51.9	69.85	34.93	12.7	
C	2.125	53.9	76.7	55.0	76.20	42.85	14.3	
	2.250	57.1	79.88	58.2	79.38	42.85	14.3	
	2.375	60.3	83.06	61.4	82.55	42.85	14.3	
	2.500	63.5	86.23	64.6	85.73	42.85	14.3	
	2.625	66.6	89.4	67.7	88.91	42.85	15.9	
	2.750	69.8	92.58	70.9	88.90	42.85	15.9	
	2.875	73.0	95.76	74.1	95.25	42.85	15.9	
	3.000	76.2	97.33	77.3	98.43	42.85	15.9	
D	3.125	79.3	100.5	80.5	101.60	42.85	19.8	
	3.250	82.5	105.28	83.6	104.78	42.85	19.8	
	3.375	85.7	108.46	86.8	107.95	42.85	19.8	
	3.500	88.9	111.63	90.0	111.13	42.85	19.8	
	3.625	92.0	114.8	93.1	114.30	42.85	19.8	
	3.750	95.2	117.98	96.3	117.48	42.85	19.8	
	3.875	98.4	121.16	99.5	120.65	42.85	19.8	
	4.000	101.6	124.33	102.7	123.83	42.85	19.8	
F								

结构说明 (Structure Description):
Equivalent to AES M01 Johncrane Type 9 Seal
小弹簧密封, 非平衡型密封 (Multiple spring design, Unbalanced seal)

运行参数 (Operating Limits):
温度 (Temperature): -40---250°C
线速 (Speed): 15m/s
压力 (Pressure): 12bar
标准尺寸 (Standard size): 0.5" - 4"

常用材料组合 (Material):
密封环 (Seal ring): 石墨, 碳化硅, 陶瓷, 氧化铝 (Car, Sic, Ssic, Ceramic, TC)
辅助密封 (Secondary seals): 丁腈橡胶, 乙丙橡胶, 氟橡胶等 (NBR, EPDM, Viton etc.)
金属机件 (Spring and metal parts): 304, 316, HAST-C

CUSTOMER:	www.asinoseal.com	ASINOSEAL CO.,LTD
P.O. NO.:	Tel:+86-512-58227959	张家港爱斯迪机械密封有限公司
REF:	Fax:+86-512-58228759	
DRAWN BY:	STA'D:	Installation Drawing
CHECKED:		TYPE & SIZE:
APPVD:		AS-P09
SCALE:	DATE:	PAGE: X/X





小弹簧式机械密封
Component seal series(PTFE Wedge seals)

1	2	3	4	5	6	7	8	
Size/Inch	d1	d2	D3	D6	D7	L3	L4	L65
1.000	25.4	22.2	40.1	22.9	38.10	33.32	10.30	6.40
1.125	28.5	25.4	43.36	26.1	41.28	34.93	11.10	7.90
1.250	31.7	28.5	48.13	29.3	44.45	34.93	11.10	7.90
1.375	34.9	28.5	51.3	29.3	44.45	36.50	11.10	8.70
1.500	38.1	31.7	54.48	32.4	47.63	36.50	11.10	8.70
1.625	41.2	34.9	60.83	35.6	50.80	44.45	11.10	8.70
1.750	44.4	38.1	64	38.8	53.98	44.45	11.10	9.50
1.875	47.6	41.2	65.58	42.4	60.33	44.45	12.70	9.50
2.000	50.8	44.4	70.36	45.5	63.50	44.45	12.70	9.50
2.125	53.9	47.6	76.7	48.7	66.68	52.37	12.70	11.10
2.250	57.1	50.8	79.88	51.9	69.85	52.37	12.70	11.10
2.375	60.3	53.9	83.06	55.0	76.20	52.37	14.30	11.10
2.500	63.5	57.1	86.23	58.2	79.38	52.37	14.30	11.10
2.625	66.6	60.3	89.4	61.4	82.55	52.37	14.30	11.10
2.750	69.8	63.5	92.58	64.6	85.73	52.37	14.30	11.10
2.875	73.0	66.6	95.76	67.7	85.73	52.37	15.90	11.10
3.000	76.2	69.8	97.33	70.9	88.90	52.37	15.90	11.10
3.125	79.3	73.0	100.5	74.1	95.25	52.37	15.90	11.10
3.250	82.5	76.2	105.28	77.3	98.43	52.37	15.90	14.30
3.375	85.7	79.3	108.46	80.5	101.60	52.37	19.80	14.30
3.500	88.9	82.5	111.63	83.6	104.78	52.37	19.80	14.30
3.625	92.0	85.7	114.8	86.8	107.95	52.37	19.80	14.30
3.750	95.2	88.9	117.98	90.0	111.13	52.37	19.80	14.30
3.875	98.4	92.0	121.16	93.1	114.30	52.37	19.80	14.30
4.000	101.6	95.2	124.33	96.3	117.48	52.37	19.80	14.30

结构说明 (Structure Description):
Equivalent to AES M01, Johncrane Type 9 Seal.
小弹簧结构, 平衡型密封 (Multiple spring design - balanced seal)

运行参数 (Operating Limits):
温度 (Temperature): -40---250°C
转速 (Speed): 15m/s
压力 (Pressure): 25bar
标准尺寸 (Standard size): 1" - 4"

常用材料组合 (Material):
密封环 (Seal ring): 石墨, 碳化硅, 陶瓷, 氧化铝 (Car, Sic, Sic, Ceramic, TC)
辅助密封 (Secondary seal): 丁腈橡胶, 乙丙橡胶, 氟橡胶等 (NBR, EPDM, Viton etc.)
金属零件 (Spring and metal parts): 304, 316, HAST C

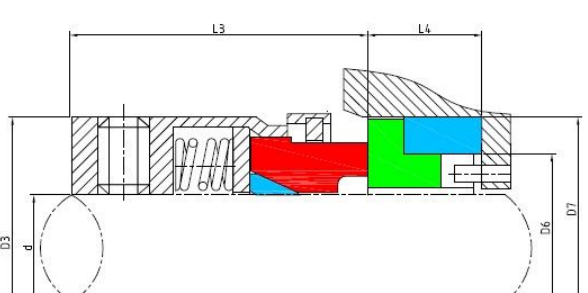
CUSTOMER:	www.asinoseal.com	ASINOSEAL CO.,LTD
P.O. NO.:	Tel:+86-512-58227959	张家港爱斯迪密封有限公司
REF:	Fax:+86-512-58228759	Installation Drawing
DRAWN BY:	STA'D:	TYPE & SIZE:
CHECKED:	No.265 South Chang'An	AS-P09B
APPV:	Rd,Zhangjiagang ,China	
SCALE:	DATE:	PAGE: X/X





小弹簧式机械密封 Component seal series (PTFE Wedge seals)

	1	2	3	4	5	6	7	8
Size/Inch	d	D3	D6	D7	L3	L4		
0.500	12.7	23.80	13.4	25.40	23.80	7.9		
0.625	15.8	26.97	16.6	31.75	23.80	10.3		
0.750	19.0	30.15	19.7	34.93	23.80	10.3		
0.875	22.2	32.32	22.9	38.10	23.80	10.3		
1.000	25.4	36.50	26.1	41.28	25.40	11.1		
1.125	28.5	39.67	29.3	44.45	25.40	11.1		
1.250	31.7	42.85	32.4	47.63	25.40	11.1		
1.375	34.9	49.20	35.6	50.80	34.93	11.1		
1.500	38.1	49.20	38.8	53.98	28.58	11.1		
1.625	41.2	57.15	42.4	60.33	29.36	12.7		
1.750	44.4	58.72	45.5	63.50	34.93	12.7		
1.875	47.6	63.50	48.7	66.68	34.93	12.7		
2.000	50.8	66.68	51.9	69.85	34.93	12.7		
2.125	53.9	71.42	55.0	76.20	42.85	14.3		
2.225	57.1	72.21	58.2	79.38	34.93	14.3		
2.375	60.3	76.20	61.4	82.55	42.85	14.3		
2.500	63.5	79.38	64.6	85.73	34.93	14.3		
2.625	66.6	82.55	67.7	85.73	42.85	15.9		
2.750	69.8	85.73	70.9	88.90	42.85	15.9		
2.875	73.0	88.90	74.1	95.25	42.85	15.9		
3.000	76.2	92.08	77.3	98.43	42.85	15.9		
3.125	79.3	95.25	80.5	101.60	42.85	19.8		
3.250	82.5	98.43	83.6	104.78	42.85	19.8		
3.375	85.7	101.60	86.8	107.95	42.85	19.8		
3.500	88.9	104.78	90.0	111.13	42.85	19.8		
3.625	92.0	107.95	93.1	114.30	42.85	19.8		
3.750	95.2	111.13	96.3	117.48	42.85	19.8		
3.875	98.4	114.30	99.5	120.65	42.85	19.8		
4.000	101.6	117.48	102.7	123.83	42.85	19.8		



结构说明 (Structure Description):
Equivalent to AES M05, Johncrane Type 9T Seal
小弹簧结构, 非平衡型密封 (Multiple spring design - Unbalanced seal)

运行参数 (Operating Limits):
温度 (Temperature): -40---250°C
线速 (Speed): 15m/s
压力 (Pressure): 12bar
标准尺寸 (Standard size): 0.5" - 4"

常用材料组合 (Material):
密封环 (Seal rings): 石墨, 碳化硅, 陶瓷, 氧化铝 (Car, SiC, SiC, Ceramic, TC)
辅助密封 (Secondary seals): 丁腈橡胶, 乙丙橡胶, 氟橡胶等 (NBR, EPDM, Viton etc.)
金属零件 (Spring and metal parts): 304, 316, Hast C

CUSTOMER:	www.asinoseal.com	ASINOSEAL CO.,LTD
P.O. NO.:	Tel:+86-512-58227959	张家港爱斯新机械密封有限公司
REF:	Fax:+86-512-58228759	
DRAWN BY:	STA'D: Mail:sales@asinoseal.com	Installation Drawing
CHECKED:	No.265 South Chang'an	TYPE & SIZE:
APPV:	Rd,Zhangjiagang ,China	AS-P09T
SCALE:	DATE: PAGE:X/X	





小弹簧式机械密封
Component seal series(PTFE Wedge seals)

	1	2	3	4	5	6	7	8	
Size/Inch	d	d1	d3	d6	d7	L3	L4	L65	
A	1.000	25.4	22.2	36.50	22.9	38.10	33.32	10.3	8.7
	1.125	28.5	25.4	39.67	26.1	41.28	34.93	11.1	8.7
	1.250	31.7	28.5	42.85	29.3	44.45	34.93	11.1	8.7
	1.375	34.9	28.5	49.20	29.3	44.45	42.85	11.1	8.7
	1.500	38.1	31.7	49.20	32.4	47.63	36.50	11.1	8.7
	1.625	41.2	34.9	57.15	35.6	50.80	40.48	11.1	11.1
B	1.750	44.4	38.1	58.72	38.8	53.96	44.45	11.1	11.1
	1.875	47.6	41.2	63.50	42.4	60.33	44.45	12.7	11.1
	2.000	50.8	44.4	66.68	45.5	63.50	44.45	12.7	11.1
	2.125	53.9	47.6	71.42	48.7	66.68	52.37	12.7	12.7
	2.250	57.1	50.8	72.21	51.9	69.85	44.45	12.7	12.7
	2.375	60.3	53.9	76.20	55.0	76.20	52.37	14.3	12.7
C	2.500	63.5	57.1	79.38	58.2	79.38	44.45	14.3	12.7
	2.625	66.6	60.3	82.55	61.4	82.55	52.37	14.3	12.7
	2.750	69.8	63.5	85.73	64.6	85.73	52.37	14.3	12.7
	2.875	73.0	66.6	88.90	67.7	85.73	52.37	15.9	12.7
	3.000	76.2	69.8	92.08	70.9	88.90	52.37	15.9	12.7
D	3.125	79.3	73.0	95.25	74.1	95.25	52.37	15.9	14.3
	3.250	82.5	76.2	98.43	77.3	98.43	52.37	15.9	14.3
	3.375	85.7	79.3	101.60	80.5	101.60	52.37	19.8	14.3
	3.500	88.9	82.5	104.78	83.6	104.78	52.37	19.8	14.3
	3.625	92.0	85.7	107.95	86.8	107.95	52.37	19.8	14.3
	3.750	95.2	88.9	111.13	90.0	111.13	52.37	19.8	14.3
E	3.875	98.4	92.0	114.30	93.1	114.30	52.37	19.8	14.3
	4.000	101.6	95.2	117.48	96.3	117.48	52.37	19.8	14.3

结构说明 (Structure Description):
Equivalent to AES M06, Johncrane 9BT seal
小弹簧结构, 平衡型设计 (Multiple spring design + balanced seal)

运行参数 (Operating Limits):
温度 (Temperature): -40---250°C
速度 (Speed): 15m/s
压力 (Pressure): 25bar
标准尺寸 (Standard size): 1" - 4"

常用材料组合 (Material):
密封环 (Seal rings): 石墨, 碳化硅, 陶瓷, 氧化铝 (Car, Sic, Ssic, Ceramic, TC)
辅助密封 (Secondary seals): 丁腈橡胶, 乙丙橡胶, 氟橡胶等 (NBR, EPDM, Viton etc.)
金属零件 (Spring and metal parts): 304, 316, HAST-C

CUSTOMER:	www.asinoseal.com	ASINOSEAL CO.,LTD
P.O. NO.:	Tel:+86-512-58227959	张家港爱斯密封机械有限公司
REF:	Fax:+86-512-58228759	
DRAWN BY:	STA'D: Mail:sales@asinoseal.com	Installation Drawing
CHECKED:	No.265 South Chang'An Rd,Zhangjiagang ,China	TYPE & SIZE:
APPVD:		AS-P09BT
SCALE:	DATE:	PAGE:X/X





小弹簧式机械密封 Component seal series(PTFE Wedge seals)

Size/Metric	d	d1	D3	D6	D7	L3	L4	D8	L65
A 14	18	14	32	21	25	30.5	12.0	18.5	6.00
A 16	20	16	34	23	27	30.5	12.0	18.5	6.00
A 18	22	18	36	27	33	31.5	13.5	20.5	6.50
A 20	24	20	38	29	35	31.5	13.5	20.5	6.50
A 22	26	22	40	31	37	31.5	13.5	20.5	6.50
A 24	28	24	42	33	39	34.2	13.3	20.3	6.70
B 25	30	25	44	34	40	34.5	13.0	20.0	7.00
B 28	33	28	47	37	43	37.5	12.5	19.5	7.50
B 30	35	30	49	39	45	38.0	12.0	19.0	8.00
B 32	38	32	54	42	48	38.0	12.0	19.0	8.00
B 33	38	33	54	42	48	38.0	12.0	19.0	8.00
B 35	40	35	56	44	50	38.0	12.0	19.0	8.00
C 38	43	38	59	49	56	39.5	13.0	20.0	10.00
C 40	45	40	61	51	58	39.5	13.0	20.0	10.00
C 43	48	43	64	54	61	39.5	13.0	20.0	10.00
C 45	50	45	66	56	63	39.5	13.0	20.0	10.00
C 48	53	48	69	59	66	39.5	13.0	20.0	10.00
D 50	55	50	71	62	70	44.0	13.5	20.5	11.50
D 53	58	53	78	65	73	44.0	13.5	20.5	11.50
D 55	60	55	80	67	75	44.0	13.5	20.5	11.50
D 58	63	58	83	70	78	49.0	13.5	20.5	11.50
D 60	65	60	85	72	80	49.0	13.5	20.5	11.50
D 63	68	63	88	75	83	49.0	13.5	20.5	11.50
E 65	70	65	90	77	85	49.0	13.5	20.5	11.50
E 70	75	70	95	83	92	55.5	14.5	21.5	13.50
E 75	80	75	104	88	97	55.5	14.5	21.5	13.50
E 80	85	80	109	95	105	55.0	15.0	22.0	13.00
E 85	90	85	114	100	110	60.0	15.0	22.0	13.00
F 90	95	90	119	105	115	60.0	15.0	22.0	13.00
F 95	100	95	124	110	120	60.0	15.0	22.0	13.00
F 100	105	100	129	115	125	60.0	15.0	22.0	13.00

结构说明(Structure Description):
Equivalent to AES M04, Burgmann BT-C56.KB, Jahn Crane 59B
小弹簧机械密封(Multiple spring design + balanced seal)

运行参数(Operating Limits):
温度(Temperature): -40---250°C
速度(Speed): 15m/s
压力(Pressure): 25bar
标准尺寸(Standard size): 14 - 100mm

常用材料组合(Material):
密封环(Seat ring): 石墨, 陶瓷, 氧化铝 (Car, Sic, Sic, Ceramic, TIC)
辅助密封(Secondary seal): 丁腈橡胶, 乙丙橡胶, 氟橡胶等 (NBR, EPDM, Viton etc.)
金属件(Spring and metal parts): 304, 316, HAST C

CUSTOMER:	www.asinoseal.com	ASINOSEAL CO.,LTD 张家港爱斯诺机械密封有限公司
P.O. NO.:	Tel:+86-512-58227959	
REF:	Fax:+86-512-58228759	Installation Drawing
DRAWN BY:	STA'D:	
CHECKED:		No.265 South Chang'An Rd,Zhangjiagang ,China
APPVD:		TYPE & SIZE:
SCALE:	DATE:	AS-P59B
	PAGE: X/X	





小弹簧式机械密封
Component seal series(PTFE Wedge seals)

Size/Metric	d	D3	D6	D7	L3	L4	L8
14	14	24	21	25	23.0	12.0	18.5
16	16	26	23	27	23.0	12.0	18.5
18	18	32	27	33	24.0	13.5	20.5
20	20	34	29	35	24.0	13.5	20.5
22	22	36	31	37	24.0	13.5	20.5
24	24	38	33	39	26.7	13.3	20.3
25	25	39	34	40	27.0	13.0	20.0
28	28	42	37	43	30.0	12.5	19.5
30	30	44	39	45	30.5	12.0	19.0
32	32	46	42	48	30.5	12.0	19.0
33	33	47	42	48	30.5	12.0	19.0
35	35	49	44	50	30.5	12.0	19.0
38	38	54	49	56	32.0	13.0	20.0
40	40	56	51	58	32.0	13.0	20.0
43	43	59	54	61	32.0	13.0	20.0
45	45	61	56	63	32.0	13.0	20.0
48	48	64	59	66	32.0	13.0	20.0
50	50	66	62	70	34.0	13.5	20.5
53	53	69	65	73	34.0	13.5	20.5
55	55	71	67	75	34.0	13.5	20.5
58	58	78	70	78	39.0	13.5	20.5
60	60	80	72	80	39.0	13.5	20.5
63	63	83	75	83	39.0	13.5	20.5
65	65	85	77	85	39.0	13.5	20.5
68	68	88	81	90	39.0	13.5	20.5
70	70	90	83	92	45.5	14.5	21.5
75	75	95	88	97	45.5	14.5	21.5
80	80	104	95	105	45.0	15.0	22.0
85	85	109	100	110	45.0	15.0	22.0
90	90	114	106	115	50.0	15.0	22.0
95	95	119	110	120	50.0	15.0	22.0
100	100	124	115	125	50.0	15.0	22.0

结构说明(Structure Description):
Equivalent to AES M03,Burgmann BT-C56,KU,Johncrane 59U
小弹簧结构, 非平衡型密封 (Multiple spring design + Unbalanced seal)

运行参数(Operating Limits):
温度(Temperature): -40---250°C
转速(Speed): 15m/s
压力(Pressure): 12bar
标准尺寸(Standard size): 1/4 - 100mm

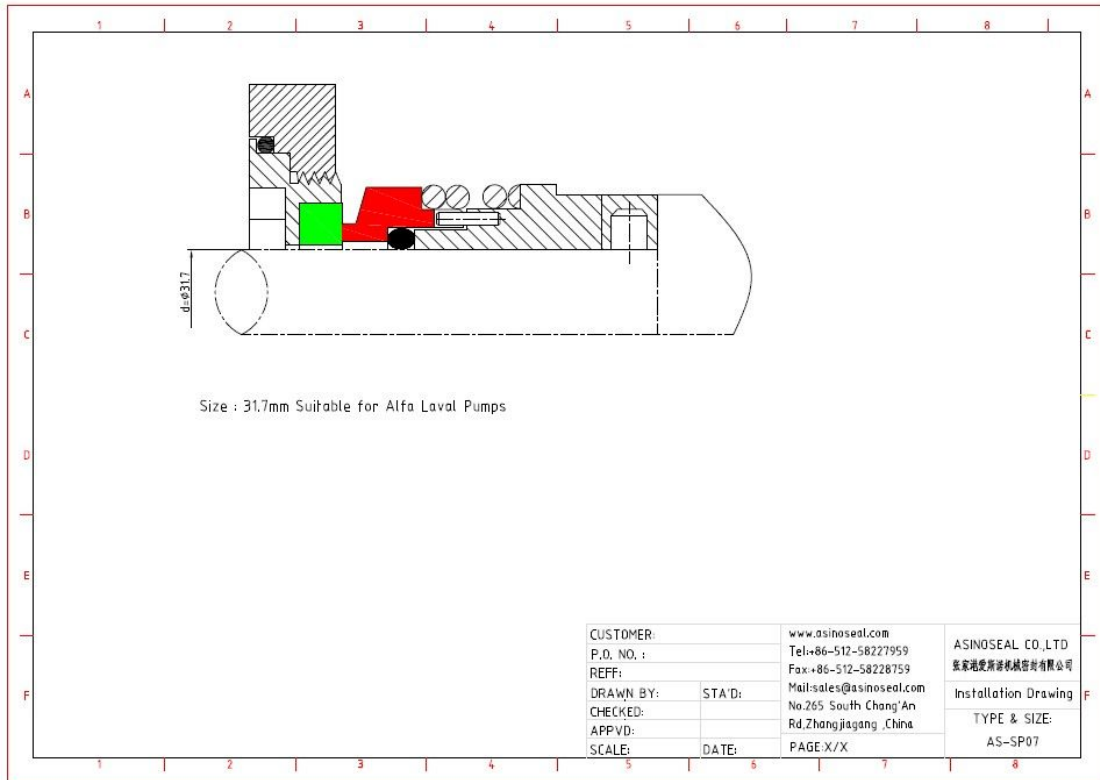
常用材料组合(Material):
密封环(Seal rings): 石墨, 碳化硅, 陶瓷, 氧化铝 (Car,Sic,Ssic,Ceramic,TC)
辅助密封(Secundary seals): 丁腈橡胶, 乙丙橡胶, 氟橡胶等 (NBR,EPDM,Viton etc.)
金属壳体(Spring and metal parts): 304,316,HAST C

CUSTOMER:	www.asinoseal.com	ASINOSEAL CO.,LTD 张家港爱斯诺机械密封有限公司
P.O. NO.:	Tel:+86-512-58227959	
REF:	Fax:+86-512-58228759	Installation Drawing
DRAWN BY:	STA'D:	
CHECKED:		AS-P59U
APPVD:		
SCALE:	DATE:	PAGE:X/X



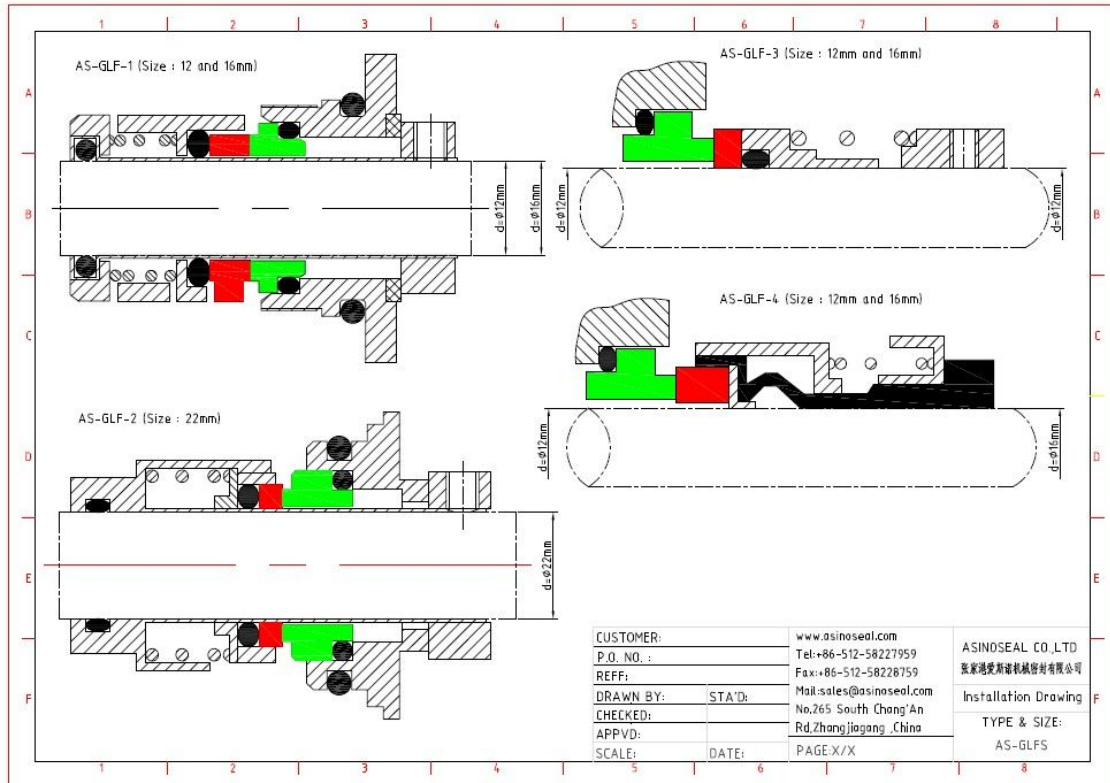


卫生泵机械密封
Component seal series(Sanitary pump seals)



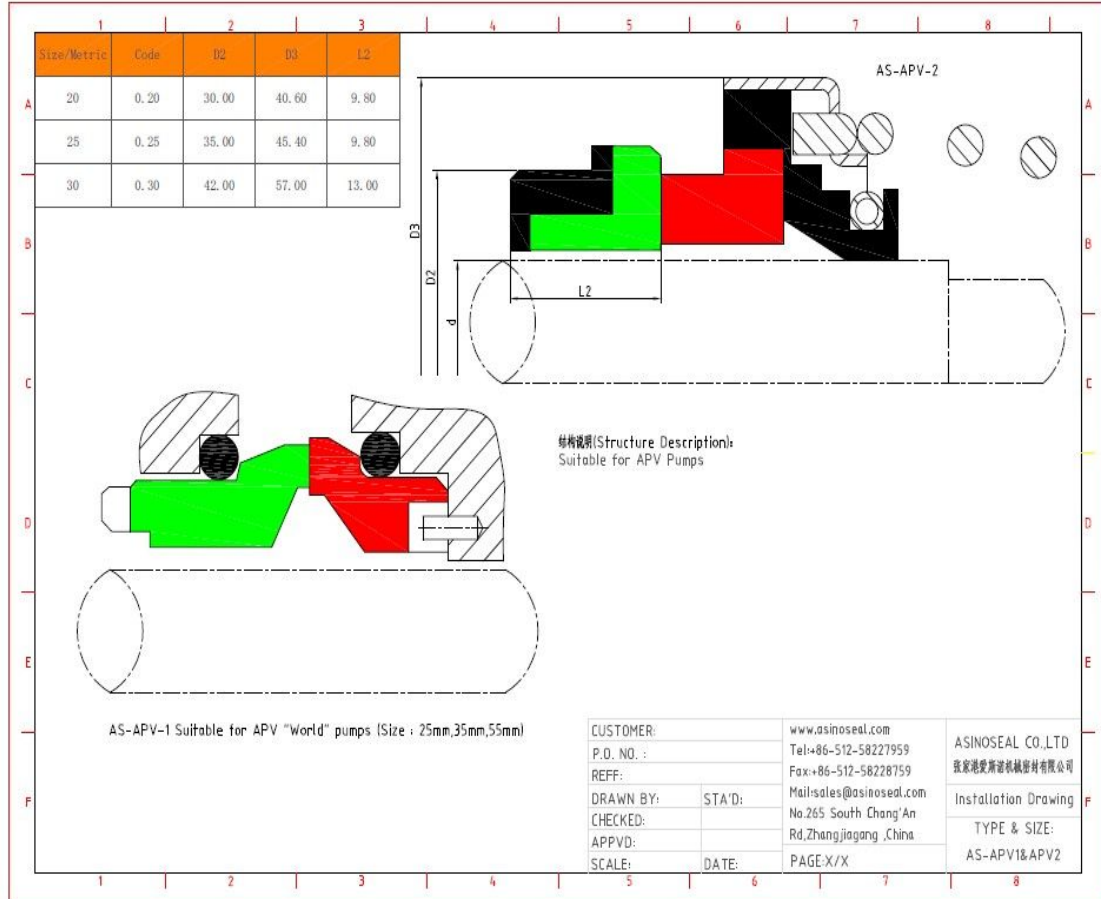


格兰富泵用机械密封
Mechanical seal for Grundfos pumps



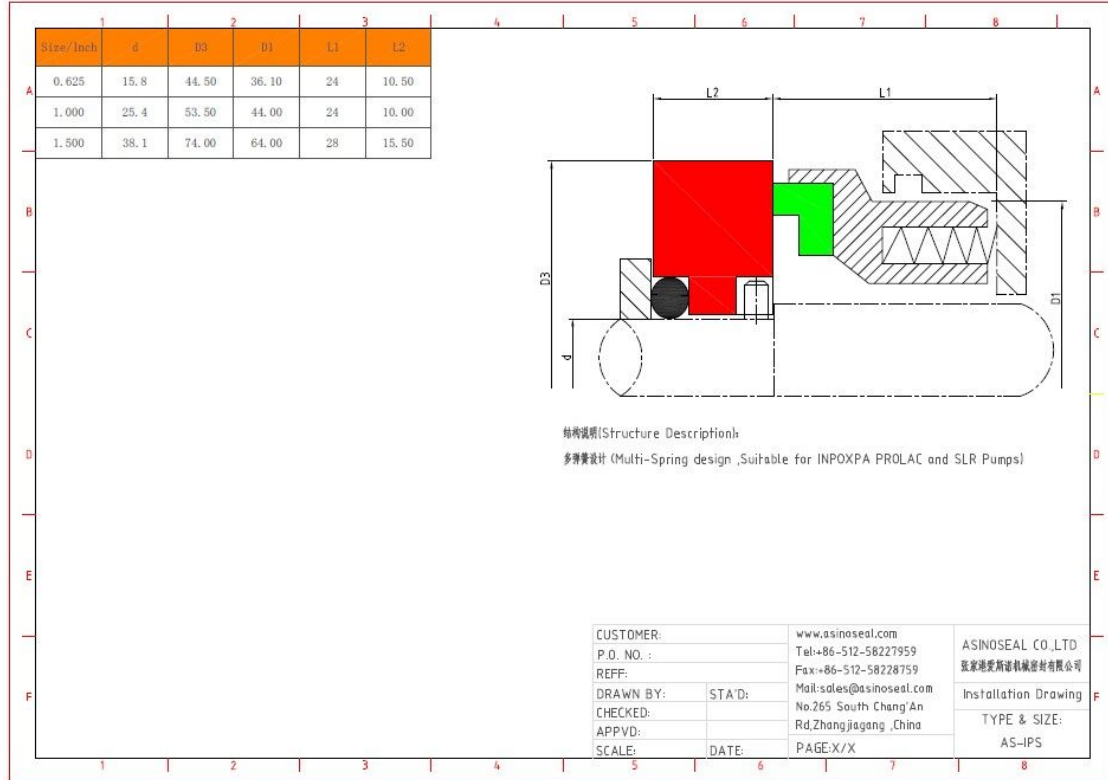


卫生泵机械密封
Component seal series(Sanitary pump seals)





卫生泵机械密封
 Mechanical seal for Inpoxpa Prolac and SLR Pump





Mechanical seal

船用泵机械密封

Marine Used pump seal

