

AS-R1527

• 技术参数

密封腔温度: $-20^{\circ}\text{C} \sim 180^{\circ}\text{C}$
 线速度: $\leq 15\text{m/s}$
 密封腔压力: $\leq 1.0\text{Mpa}$

• SUGGESTED OPERATING LIMITS

Temperature: $-20^{\circ}\text{C} \sim 180^{\circ}\text{C}$
 Speed: $\leq 15\text{m/s}$
 Pressure: $\leq 1.0\text{Mpa}$

• 材料组合

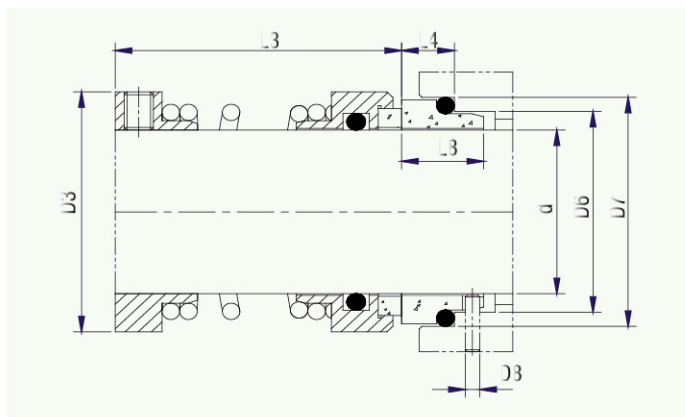
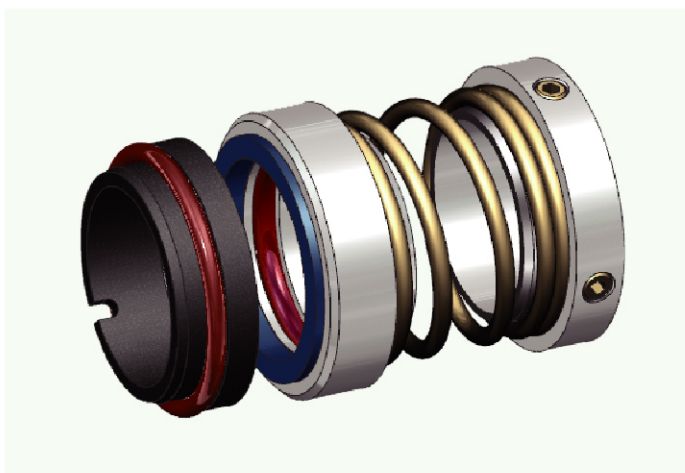
动环: 石墨/碳化硅/碳化钨
 静环: 陶瓷/碳化硅/碳化钨

• COMBINED MATERIAL

Rotary face: Carbon/Sic/TC
 Stat Ring: Ceramic/Sic/TC

静环种类: 标准配AS-S24DINL ,
 其他可用AS-S06/S09

Seat Type: Standard AS-S24DINL,
 Alternative AS-S06/S09



SIZE/METRIC	D3	D6	D7	D8	L3	L4	L8
d							
18	32	27	33	3	35	10	17
20	34	29	35	3	35	10	17
22	36	31	37	3	35	10	17
24	38	33	39	3	40	10	17
25	39	34	40	3	40	10	17
28	42	37	43	3	40	10	17
30	44	39	45	3	40	10	17
32	46	42	48	3	45	10	17
33	47	42	48	3	45	10	17
35	49	44	50	3	45	10	17
38	54	49	56	4	44	11	18
40	56	51	58	4	44	11	18
43	59	54	61	4	49	11	18
45	61	56	63	4	49	11	18
48	64	59	66	4	49	11	18
50	66	62	70	4	47	13	20
53	69	65	73	4	57	13	20
55	71	67	75	4	57	13	20
58	78	70	78	4	57	13	20
60	80	72	80	4	57	13	20
63	83	75	83	4	57	13	20
65	85	77	85	4	67	13	20
68	88	81	90	4	64.7	15.3	20
70	90	83	92	4	64.7	15.3	20
75	99	88	97	4	64.7	15.3	20
80	104	95	105	4	74.3	15.7	22.5
85	109	100	110	4	74.3	15.7	22.5
90	114	105	115	4	74.3	15.7	22.5
95	119	110	120	4	74.3	15.7	22.5
100	124	115	125	4	74.3	15.7	22.5