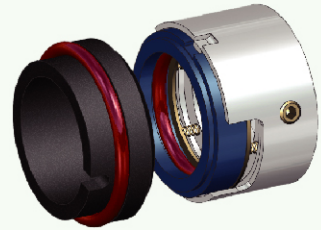
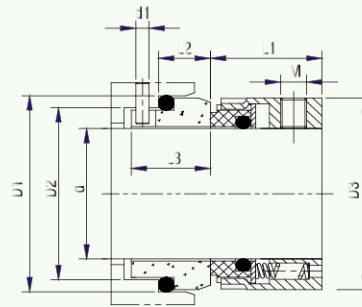


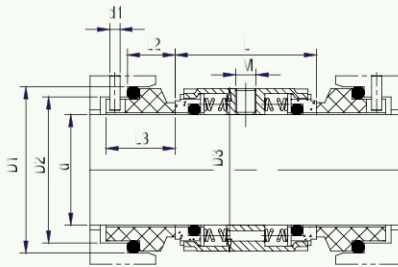
AS-R74N&R74D

- 技术参数
密封腔温度: -20℃ ~ 180℃
线速度: ≤20m/s
密封腔压力: ≤1.5Mpa
- SUGGESTED OPERATING LIMITS
Temperature: -20℃ ~ 180℃
Speed: ≤20m/s
Pressure: ≤1.5Mpa
- 材料组合
动环: 不锈钢/石墨/碳化硅/碳化钨
静环: 石墨/碳化硅/碳化钨
- COMBINED MATERIAL
Rotary face: SUS/Carbon/Sic/TC
Stat Ring: Carbon/Sic/TC



AS-R74N /R74D Have pump ring design which called R74F/R74F-D

静环种类: 标准配AS-S09 ,
其他可用AS-S04/S06/S92/S13
Seat Type: Standard AS-S09, Alternative AS-S04/S06/S92/S13



SIZE/METRIC	D3	D2	D1	d1	L1	L2	L3	L	M
14	25	21	25	3	25.0	10.0	17.5	/	M5
16	27	23	27	3	25.0	10.0	17.5	/	M5
18	33	27	33	3	26.0	11.5	19.5	38	M5
20	35	29	35	3	26.0	11.5	19.5	38	M5
22	37	31	37	3	26.0	11.5	19.5	38	M5
24	39	33	39	3	28.5	11.5	19.5	38	M5
25	40	34	40	3	28.5	11.5	19.5	38	M5
28	43	37	43	3	31.0	11.5	19.5	39	M6
30	45	39	45	3	31.0	11.5	19.5	39	M6
32	47	42	48	3	31.0	11.5	19.5	39	M6
33	48	42	48	3	31.0	11.5	19.5	39	M6
35	50	44	50	3	31.0	11.5	19.5	39	M6
38	55	49	56	4	31.0	14.0	22.0	41	M6
40	57	51	58	4	31.0	14.0	22.0	42	M6
43	60	54	61	4	31.0	14.0	22.0	42	M6
45	62	56	63	4	31.0	14.0	22.0	42	M6
48	65	59	66	4	31.0	14.0	22.0	42	M6
50	67	62	70	4	32.5	15.0	23.0	43	M6
53	70	65	73	4	32.5	15.0	23.0	43	M6
55	72	67	75	4	32.5	15.0	23.0	43	M6
58	79	70	78	4	37.5	15.0	23.0	56	M8
60	81	72	80	4	37.5	15.0	23.0	56	M8
63	84	75	83	4	37.5	15.0	23.0	55	M8
65	86	77	85	4	37.5	15.0	23.0	55	M8
68	89	81	90	4	34.5	18.0	26.0	55	M8
70	91	83	92	4	42.0	18.0	26.0	56	M8
75	99	88	97	4	42.0	18.0	26.0	56	M8
80	104	95	105	4	41.8	18.2	26.2	56	M8
85	109	100	110	4	41.8	18.2	26.2	56	M8
90	114	105	115	4	46.8	18.2	26.2	56	M8
95	119	110	120	4	47.8	17.2	25.2	56	M8
100	124	115	125	4	47.8	17.2	25.2	56	M8