



ASINO-SEAL MULTIPLE SPRING MECHANICAL SEALS 小弹簧机械密封

AS-R58B&P59B

• 技术参数

密封腔温度: $-20^{\circ}\text{C} \sim 180^{\circ}\text{C}$
(AS-P59B can upper to 250°C)
线速度: $\leq 15\text{m/s}$
密封腔压力: $\leq 2.5\text{Mpa}$

• SUGGESTED OPERATING LIMITS

Temperature: $-20^{\circ}\text{C} \sim 180^{\circ}\text{C}$ (AS-P59B can upper to 250°C)
Speed: $\leq 15\text{m/s}$
Pressure: $\leq 2.5\text{Mpa}$

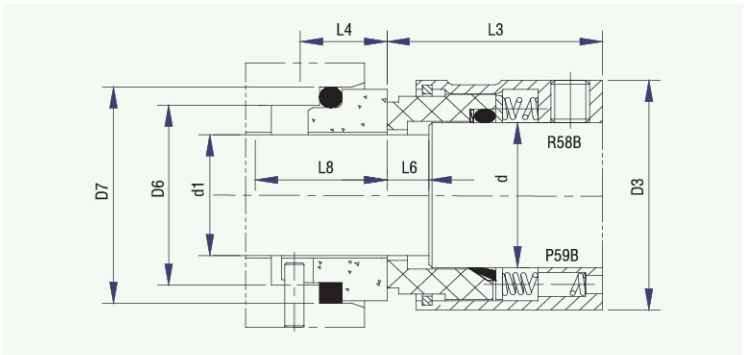
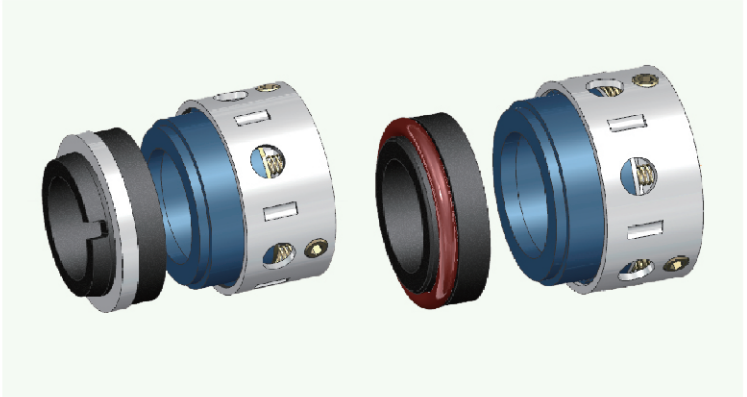
• 材料组合

动环: 石墨/碳化硅/碳化钨
静环: 陶瓷/碳化硅/碳化钨

• COMBINED MATERIAL

Rotary face: Carbon/Sic/TC
Stat Ring: Ceramic/Sic/TC

静环种类: 标准配AS-SBP,其他可用AS-SBO
Seat Type: Standard AS-SBP, Alternative AS-SBO/SBC/SBD



SIZE/METRIC	d	D3	D6	D7	L3	L4	L6
14	18	32	21	25	30.5	12.0	6.0
16	20	34	23	27	30.5	12.0	6.0
18	22	36	27	33	31.5	13.5	6.5
20	24	38	29	35	31.5	13.5	6.5
22	26	40	31	37	31.5	13.5	6.5
24	28	42	33	39	34.2	13.3	6.7
25	30	44	34	40	34.5	13.0	7.0
28	33	47	37	43	37.5	12.5	7.5
30	35	49	39	45	38.0	12.0	8.0
32	38	54	42	48	38.0	12.0	8.0
33	38	54	42	48	38.0	12.0	8.0
35	40	56	44	50	38.0	12.0	8.0
38	43	59	49	56	39.5	13.0	10.0
40	45	61	51	58	39.5	13.0	10.0
43	48	64	54	61	39.5	13.0	10.0
45	50	66	56	63	39.5	13.0	10.0
48	53	69	59	66	39.5	13.0	10.0
50	55	71	62	70	44.0	13.5	11.5
53	58	78	65	73	44.0	13.5	11.5
55	60	80	67	75	44.0	13.5	11.5
58	63	83	70	78	49.0	13.5	11.5
60	65	85	72	80	49.0	13.5	11.5
63	68	88	75	83	49.0	13.5	11.5
65	70	90	77	85	49.0	13.5	11.5
70	75	95	83	92	55.5	14.5	13.5
75	80	104	88	97	55.5	14.5	13.5
80	85	109	95	105	55.0	15.0	13.0
85	90	114	100	110	60.0	15.0	13.0
90	95	119	105	115	60.0	15.0	13.0
95	100	124	110	120	60.0	15.0	13.0
100	105	129	115	125	60.0	15.0	13.0