



## ASINO-SEAL MULTIPLE SPRING MECHANICAL SEALS 小弹簧机械密封

### AS-R8-1T&P09T

#### • 技术参数

密封腔温度:  $-20^{\circ}\text{C} \sim 180^{\circ}\text{C}$   
(AS-P09T can upper to  $250^{\circ}\text{C}$ )  
线速度:  $\leq 15\text{m/s}$   
密封腔压力:  $\leq 1.2\text{Mpa}$

#### • SUGGESTED OPERATING LIMITS

Temperature: (AS-P09T can upper to  $250^{\circ}\text{C}$ )  
Speed:  $\leq 15\text{m/s}$   
Pressure:  $\leq 1.2\text{Mpa}$

#### • 材料组合

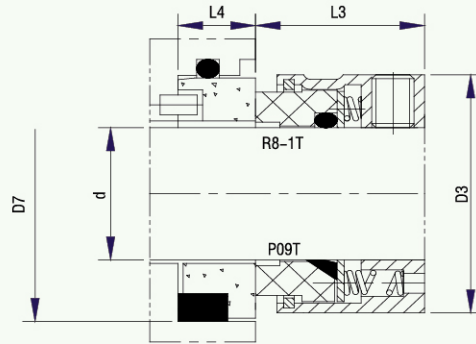
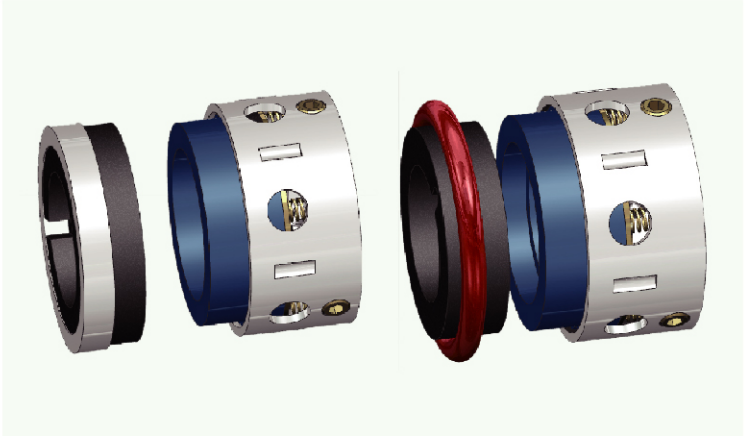
动环: 石墨/碳化硅/碳化钨  
静环: 陶瓷/碳化硅/碳化钨

#### • COMBINED MATERIAL

Rotary face: Carbon/Sic/TC  
Stat Ring: Ceramic/Sic/TC

静环种类: AS-R8-1标准配AS-SP,  
AS-P09T 标准配AS-SA

Seat Type: AS-R8-1T standard with AS-SP seat,  
AS-P09T standard with AS-SA seat



SIZE/INCH	d	D3	D7	L3	L4
0.500	12.7	23.80	25.40	23.80	7.92
0.625	15.8	26.97	31.75	23.80	10.31
0.750	19.0	30.15	34.93	23.80	10.31
0.875	22.2	32.32	38.10	23.80	10.31
1.000	25.4	36.50	41.28	25.40	11.10
1.125	28.5	39.67	44.45	25.40	11.10
1.250	31.7	42.85	47.63	25.40	11.10
1.375	34.9	49.20	50.80	34.93	11.10
1.500	38.1	49.50	53.98	28.58	11.10
1.625	41.2	57.15	60.33	29.36	12.70
1.750	44.4	58.72	63.50	34.93	12.70
1.875	47.6	63.50	66.68	34.93	12.70
2.000	50.8	66.68	69.85	34.93	12.70
2.125	53.9	71.42	76.20	42.85	14.27
2.250	57.1	72.21	79.38	34.93	14.27
2.375	60.3	76.20	82.55	42.85	14.27
2.500	63.5	79.38	85.73	34.93	14.27
2.625	66.6	82.55	85.73	42.85	15.88
2.750	69.8	85.73	88.90	42.85	15.88
2.875	73.0	88.90	95.25	42.85	15.88
3.000	76.2	92.08	98.43	42.85	15.88
3.125	79.3	95.25	101.60	42.85	19.84
3.250	82.5	98.43	104.78	42.85	19.84
3.375	85.7	101.60	107.95	42.85	19.84
3.500	88.9	104.78	111.13	42.85	19.84
3.625	92.0	107.95	114.30	42.85	19.84
3.750	95.2	111.13	117.48	42.85	19.84
3.875	98.4	114.30	120.65	42.85	19.84
4.000	101.6	117.48	123.83	42.85	19.84